



## CC3D Filament Presets



Jérémy Reeder

[VIEW IN BROWSER](#)

updated 23. 1. 2024 | published 23. 1. 2024

## Summary

PrusaSlicer filament profiles for CC3DTM polycarbonate blend and PLA.

[3D Printers](#) > [Other Printer Parts & Upgrades](#)

Tags: [prusaslicer](#) [profile](#) [cc3d](#) [preset](#)

I use the silky stuff for shiny décor, and the polycarbonate is my favorite for durable outdoor prints.

## Instructions

Put the .ini files in the directory where you keep your filament profiles (or 'presets', as the kids are now calling them).

- In Linux: ~/.config/PrusaSlicer/filament
- In Windows: C:\Users\[name]\AppData\Roaming\PrusaSlicer\filament
- In MacOS: /Users/[name]/Library/Application Support/PrusaSlicer/filament

## Model files

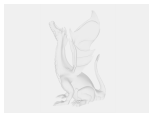


**cc3d-polycarbonate-box.3mf**

## Other files



**cc3d-pla-silk-gold.ini**



**cc3d-pc-blend-black.ini**

## License ©

This work is licensed under a  
**Creative Commons (International License)**



**Public Domain**

- 
- ✓ | Sharing without ATTRIBUTION
  - ✓ | Remix Culture allowed
  - ✓ | Commercial Use
  - ✓ | Free Cultural Works
  - ✓ | Meets Open Definition