



Chef's Choice 615 Blade Fastening Screw (S615318 equivalent)

 **Cymen Vig**

[VIEW IN BROWSER](#)

updated 12. 4. 2022 | published 22. 3. 2022

Summary

I misplaced the blade fastening screw for my Chef's Choice 615 Electric Meat Slicer. I made a replacement part to...

[Household](#) > [Other House Equipment](#)

I misplaced the blade fastening screw for my Chef's Choice 615 Electric Meat Slicer. I made a replacement part to match based on measurements (I did not have the original part to compare to). So this is not a 100% exact match but it should function as well as the original part which is part number S615318 and sold here:

<https://chefschoice.com/products/s615318>

Note that 3D printing items that come in contact with food is potentially risky due to bacterial contamination. I take no responsibility if you chose to use this part. That said, in my usage, the screw does not come in contact with the items I am slicing so I am not concerned. But please be careful! I opted to use this part instead of purchasing a replacement as it is not in stock at the moment and I did not feel like waiting.

I recommend printing this solid as there are some forces on parts of it that did not hold up even at 60% fill. You may have better luck with your materials. I printed solid in PETG.

I recommend spreading some of the white food grease on the threads to ease insertion. It's a bit of a tight fit however it should loosen up a bit with use.

Tool

If you want some assistance getting the screw on/off the machine, print the included tool as it gives you quite a bit of leverage and is a quick print even at 100% fill. I forgot to flip it over before saving the STL. It will print without supports if you flip it upside down.

Print Settings

Printer Brand:

Creality

Printer:

CR-10S

Rafts:

No

Supports:

No

Resolution:

0.20

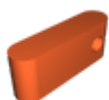
Infill:

100%

Filament: Sun PETG White

Category: Replacement Parts

Model files



615_blade_fastening_screw_tool.stl



615_blade_fastening_screw.scad



615_blade_fastening_screw_tool.scad



threads.scad



615_blade_fastening_screw.stl

[Find source .stl files on Thingiverse.com](#)

License ©

This work is licensed under a
Creative Commons (4.0 International License)



Attribution-NonCommercial

-
- ✗ | Sharing without ATTRIBUTION
 - ✓ | Remix Culture allowed
 - ✗ | Commercial Use
 - ✗ | Free Cultural Works
 - ✗ | Meets Open Definition