



Thetford Electra Magic Toilet Vent

 Cymen Vig

[VIEW IN BROWSER](#)

updated 12. 4. 2022 | published 22. 3. 2022

Summary

Some prints to attach a 75mmx30mm centrifugal fan to the Thetford Electra Magic toilet. These designs were created for...

[Household](#) > [Outdoor & Garden](#)

Tags: [toilet](#) [fan](#) [vent](#) [centrifugalfan](#) [thetford](#) [trailmanor](#)

Some prints to attach a 75mmx30mm centrifugal fan to the Thetford Electra Magic toilet. These designs were created for use with the toilet as it is mounted in the TrailManor travel trailer however some of them might be useful in other applications.

Print Settings

Printer Brand:

Creality

Printer:

CR-10S

Rafts:

No

Supports:

No

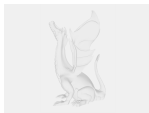
Filament: eSun PETG White

Notes:

You'll need to rotate the "Thetford_centrifugal_fan_mount" so the part that attaches the fan is on the print bed. I'll fix that next time I upload.

Category: Outdoor & Garden

Model files



thetford_fan_output_take_2_v2.f3d



thetford_fan_cover_v1.f3d



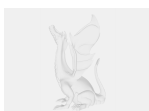
thetford_centrifugal_fan_mount.stl



thetford_fan_output_take_2.stl



thetford_fan_cover.stl



thetford_centrifugal_fan_mount_v4.f3d

[Find source .stl files on Thingiverse.com](#)

License ©

This work is licensed under a
Creative Commons (4.0 International License)



Attribution

- ✗ | Sharing without ATTRIBUTION
- ✓ | Remix Culture allowed
- ✓ | Commercial Use
- ✓ | Free Cultural Works
- ✓ | Meets Open Definition