



## Bobbin (Customizable)

 Cymen Vig

[VIEW IN BROWSER](#)

updated 12. 4. 2022 | published 22. 3. 2022

### Summary

Bobbin originally designed for classic Elna sewing machines but should be customizable to work for any sewing machine....

[Household](#) > [Other House Equipment](#)

Tags: [customizable](#) [sewing](#) [bobbin](#) [sew](#) [singer](#) [elna](#)

Bobbin originally designed for classic Elna sewing machines but should be customizable to work for any sewing machine. Our Elna machine came with one metal bobbin that was approximately 21 x 11 mm. This bobbin is by default 20.1 x 10.8 mm although you can adjust it using OpenSCAD or the Customizer (if it's working). I recommend using this slightly smaller size in a 1970s Elna machine as the plastic is not as slippery as metal.

This is a two part design. It is a tight fit and hard to get apart once together. I do recommend applying a dab or two of super glue on the inside of the bigger piece. Then push together the two halves (it may take a little bit of force and you need to align them just right). After the bobbin is together, wipe the inside bore to ensure no glue remains (there is a small empty space that should trap most/all of a small amount of excess).

### Print Settings

**Printer Brand:**

Crealitiy

**Printer:**

CR-10S

**Rafts:**

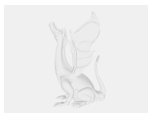
No

**Supports:**

No

Category: Replacement Parts

## Model files



**elna\_bobbin.scad**



**elna\_bobbin.stl**

[Find source .stl files on Thingiverse.com](#)

## License ©

This work is licensed under a  
**Creative Commons (4.0 International License)**



**Attribution-NonCommercial**

- 
- ✗ | Sharing without ATTRIBUTION
  - ✓ | Remix Culture allowed
  - ✗ | Commercial Use
  - ✗ | Free Cultural Works
  - ✗ | Meets Open Definition

