



## PET Bottle Planter Support

 raedzamo

[VIEW IN BROWSER](#)

updated 23. 3. 2022 | published 23. 3. 2022

### Summary

Wall mounted support for 2 600ml PET bottles used as garden planters or for holding and organizing misc workshop items.

[Household](#) > [Outdoor & Garden](#)

Tags: [bottle](#) [pot](#) [wall](#) [nut](#) [pet](#) [holder](#) [container](#)  
[planter](#) [support](#) [mount](#) [wallmount](#) [bracket](#) [bolt](#) [nail](#)

#### Bottle Planter

This is a small wallmounted support that can hold horizontally 2 600ml PET bottles to be used as planters or for holding misc workshop items such as bolts, nails, nuts, springs, etc.

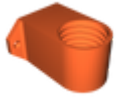
Supports: Not required

Layer height: 0.4mm@0.6 nozzle or 0.3mm@0.4 nozzle

Infill: 15%

Material: PLA but PETG is recommended

# Model files



bottle-planter-v2.stl

## License



This work is licensed under a  
[Creative Commons \(4.0 International License\)](https://creativecommons.org/licenses/by-nc/4.0/)

**Attribution-NonCommercial**

- 
- ✗ | Sharing without ATTRIBUTION
  - ✓ | Remix Culture allowed
  - ✗ | Commercial Use
  - ✗ | Free Cultural Works
  - ✗ | Meets Open Definition