



Sheikah Ornament (The Legend of Zelda - Breath of the Wild)



fasteddy

[VIEW IN BROWSER](#)

updated 12. 4. 2022 | published 30. 12. 2019

Summary

This is a hanging ornament based on the Sheikah symbol from The Legend of Zelda: Breath of the Wild.

[Art & Design](#) > [Sculptures](#)

Tags: [multicolor](#) [zelda](#) [multicolour](#) [sheikah](#) [ornament](#)
[legendofzelda](#) [breathofthewild](#) [multiextrusion](#) [mk2mm](#)

This is a hanging ornament based on the Sheikah symbol from The Legend of Zelda: Breath of the Wild. It's perfect for the rear-view mirror or Christmas tree.

I have included the Fusion 360 source file used to create the ornament for those who may want to tweak/tinker. Note that the ice model was exported from Fusion 360 and modified in MeshMixer using the sculpt tool to make it look more ice-like - the ice body in Fusion 360 looks much simpler. I would include the MeshMixer source file as well, but the .mix file format is not currently supported by this site.

Print instructions

If you've got a multi-material printer, you can print `sheikah_ornament_symbol.stl` in your chosen colour, and `sheikah_ornament_ice.stl` in a clear filament, which gives the symbol the appearance of being of being embedded in a chunk of ice, and glows nicely when light shines through it.

If you want to print it on a single-extruder machine, use `sheikah_ornament_onepiece.stl`.

The print in the cover photo was done on a quad extruder Prusa i3 MK2 MMU as follows:

- **`sheikah_ornament_ice.stl`** 3D Solutech Natural Clear PLA (extruder 1)
- **`sheikah_ornament_symbol.stl`** 3D Solutech See Through Aqua Blue PLA (extruder 2)

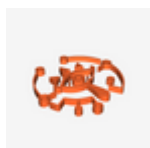
If you're printing with clear filament, pay close attention to the infill pattern you choose, as it will be visible when light shines through the ornament.

Happy printing!

Model files



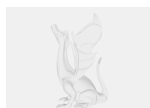
`sheikah_ornament_ice.stl`



`sheikah_ornament_symbol.stl`



`sheikah_ornament_onepiece.stl`



`sheikah_ornament.f3d`

License ©

This work is licensed under a
Creative Commons (4.0 International License)



Attribution-ShareAlike

- ✗ | Sharing without ATTRIBUTION
- ✓ | Remix Culture allowed
- ✓ | Commercial Use
- ✓ | Free Cultural Works
- ✓ | Meets Open Definition