

My Customized Parametric Cherry MX/Alps Keycap for Mechanical Keyboards



ElectricCrowbar

VIEW IN BROWSER

updated 12. 4. 2022 | published 23. 3. 2022

Summary

Customized version of <https://www.thingiverse.com/thing:468651> Created with Customizer!...

[Hobby & Makers](#) > [Other Ideas](#)

Tags: **customized**

Customized version of <https://www.thingiverse.com/thing:468651>

Created with Customizer! https://www.thingiverse.com/apps/customizer/run?thing_id=468651

Instructions

Using the following options:

key_length = 1.75

key_height = 1

key_profile_index = 6

keytop_thickness = 2

wall_thickness = 3

has_brim = 0

brim_radius = 11

brim_depth = .3

stabilizers = 0

stabilizer_distance = 50

inverted_dish = 0

stem_profile = 0

stem_inset = 0

stem_offset = 0

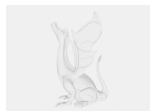
Category: Other

Model files



key_20190419-62-17i95tz.stl

Other files



sources.txt

[Find source .stl files on Thingiverse.com](https://www.thingiverse.com/thing/20190419-62-17i95tz)

License

This work is licensed under a
Creative Commons (4.0 International License)



Attribution-ShareAlike

- ✗ | Sharing without ATTRIBUTION
- ✓ | Remix Culture allowed
- ✓ | Commercial Use
- ✓ | Free Cultural Works
- ✓ | Meets Open Definition