



Di3 Thumbwheel Bed Dial



[VIEW IN BROWSER](#)

updated 12. 4. 2022 | published 23. 3. 2022

Summary

For M3 stainless steel nut that are 5.5mm wide. I tried the other thumb wheel on here, but it did not fit the M3 nuts...

[3D Printers](#) > [3D Printers - Upgrades](#)

Tags: [dialindicator](#) [wanhaoduplicatori3](#) [bedleveling](#) [onshape](#)
[thumbwheel](#) [cocooncreate](#) [finetuning](#)

For M3 stainless steel nut that are 5.5mm wide.

I tried the other thumb wheel on here, but it did not fit the M3 nuts I got from my local Ace Hardware.

I used a black Sharpie marker to give some contrast.

November 2016 UPDATE: I have a new design that is smaller, a bit pointier, and works with more printers. Check it out here: [small thumbwheels](#)

How I Designed This

At the time I made this, Onshape did not support text so I made my own characters.

If you have an Onshape account, I made the file public: <https://cad.onshape.com/documents/f3fdcd0c31b648a4bc42e302/w/54c2055210294548a7624886/e/8df74fd910da407f98be51b6>

(bad link fixed)

I also added variables to the Onshape file.

Nut size:

-- #nut_width is set to 5.5 mm

The offset tolerance--make larger if nut is the correct size but too tight:

-- #offset is set to 0.2mm

Instructions

Best printed at 0.1mm layer height. I used 25% honeycomb fill using S3D. May want to print at 0.2 mm for a quicker print and then use them to fine tune for a better print.

Was suggested by the fine folks at: <http://3dprinterbrain.com/pmwiki.php/DupI3/RecommendedMods>

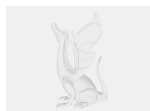
Category: 3D Printer Parts

Model files

di3_thumbwheel_-_dial.stl



Other files



sources.txt

[Find source .stl files on Thingiverse.com](https://www.thingiverse.com/thing/1000000)

License ©

This work is licensed under a
Creative Commons (4.0 International License)



Attribution-NonCommercial

- ✗ | Sharing without ATTRIBUTION
- ✓ | Remix Culture allowed
- ✗ | Commercial Use
- ✗ | Free Cultural Works
- ✗ | Meets Open Definition