

Mise à niveau



Tatie Devouvres

VIEW IN BROWSER

updated 12. 4. 2022 | published 23. 3. 2022

Summary

Inspired by a wooden commercial game, it can be used to find a code in an escape game.

[Toys & Games](#) > [Puzzles & Brain-teasers](#)

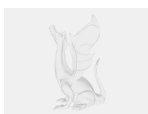
Tags: [escaperoom](#) [escapegame](#)

Jeu de manipulation inspiré d'un jeu commercial en bois.

Complément de la fiche-bricolage n°3 du site S'CAPE (<https://scape.enepe.fr/mise-a-niveau.html>)

(NB: les fiches cylindriques proposées n'ont pas de décrochements comme sur la photo car cela les fragilisait trop.)

Model files



large_display_mise_a_niveau_boite_154151.stl



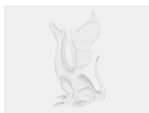
large_display_m_a_n_fiche4_154151.stl



large_display_m_a_n_fiche5_154151.stl



large_display_m_a_n_fiche3_154151.stl



large_display_m_a_n_fiche1_154151.stl



man_fiche6.stl



m_a_n_fiche5.stl



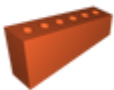
m_a_n_fiche4.stl



m_a_n_fiche2.stl



m_a_n_fiche1.stl



mise_a_niveau_boite.stl



m_a_n_fiche3.stl

[Find source .stl files on Thingiverse.com](#)

License ©

This work is licensed under a
Creative Commons (4.0 International License)



Attribution—Noncommercial—Share Alike

-
- ✗ | Sharing without ATTRIBUTION
 - ✓ | Remix Culture allowed
 - ✗ | Commercial Use
 - ✗ | Free Cultural Works
 - ✗ | Meets Open Definition