



iPhone 12/13 Pro Max dock for Mercedes Vito W447 (2014-2022)

I-**FEEL**
SOLUTIONS

I-FEEL** solutions**

[VIEW IN BROWSER](#)

updated 29. 3. 2022 | published 29. 3. 2022

Summary

Here is a simple yet effective dock to mount your iPhone 12/13 Pro Max on the cupholder of a Mercedes Vito W447



9.67 hrs



1 pcs



0.20 mm



0.40 mm



PLA



139 g



Prusa
MK3/S/S+

[Hobby & Makers](#) > [Automotive](#)

Tags: [mount](#) [car](#) [dock](#) [iphone](#) [mercedes](#) [mercedesbenz](#)
[cupholder](#) [carplay](#) [carcupholder](#) [applecarplay](#)

Photos to be published soon !

This part is a **remix of another dock** initially made for the smaller iPhone 12 (Pro) to be mounted on the cup holder on your **Mercedes-Benz Vito W447 (2014-2022)**.

The dock allows for a seamless integration of your iPhone on the cup holders to use for navigation or just to store it while charging or using Carplay.

It is made for the **iPhone 12 or 13 Pro Max only** and will easily accomodate a thin case. (tested working on my iPhone 12 Pro Max with **Pitaka air Aramid case**).

You must use a small Lightning USB cable and plug, I used an **original 0.5m Apple cable**. You must then enlarge the plug a bit to make it snug inside the dock. I used electrical tape for that purpose, about 3 layers seems to be fine.

It also features a cable channel to route the cable easily to the nearest USB port.

Please rotate the model accordingly, and the model musts be printed using some supports but they can be removed easily (make sure you select "supports from build plate only"). I would suggest printing in PETG as PLA would probably soften during hot summer days. (Even though the pre-sliced file is for PLA)

The model takes just **9.5hrs to print** in 0.2mm resolution with a 0.4mm nozzle. I use 20% triangles infill instead of gyroid as it makes the print so much faster.

Feel free to remix this dock to fit other devices or other cars !

This remix is based on



iPhone 12 Dock for Mercedes Vito (W447)

by 1234

Model files

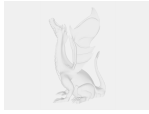


dock_12promax_vito_w447.stl

☐ Rotate accordingly ! Please read the notes in the description.



dock_12promax_vito_w447.f3d



dock_12promax_vito_w447.step

Print files



dock_12promax_vito_w447_02mm_pla_mk3_9h40m.gcode

🌀 PLA 📏 0.40 mm 📏 0.20 mm ⌚ 9.67 hrs 📊 139 g 🖨️ Prusa MK3/S/S+

📄 This GCODE file is meant to be printed on an MK3S printer using PLA

License ©

This work is licensed under a
Creative Commons (4.0 International License)



Attribution—Noncommercial—Share Alike

- ✗ | Sharing without ATTRIBUTION
- ✓ | Remix Culture allowed
- ✗ | Commercial Use
- ✗ | Free Cultural Works
- ✗ | Meets Open Definition