



T16 antenna spinner SMA



Bakermonitor1932

[VIEW IN BROWSER](#)

updated 12. 4. 2022 | published 24. 3. 2022

Summary

Antenna spinner for the factory T16 SMA antenna. I was fed up with the antenna coming loose every time I moved it.

[Hobby & Makers](#) > [RC & Robotics](#)

Tags: [knob](#) [spinner](#) [sma](#) [rpsma](#) [jumper](#) [jumpert16](#)
[t16](#) [ghz](#)

Antenna spinner for the factory T16 SMA antenna.

I was fed up with the antenna coming loose every time I moved it.

Print Settings

Printer Brand:

Creality

Printer:

Ender 3 Pro

Rafts:

No

Supports:

No

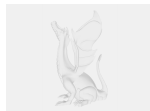
Filament: Solutech PLA

Category: R/C Vehicles

Model files



t16_antenna_nurl_nut.stl



t16_antenna_nurl_nut_v1.f3d

[Find source .stl files on Thingiverse.com](#)

License ©



This work is licensed under a
Creative Commons (4.0 International License)

Attribution-NonCommercial

- ✗ | Sharing without ATTRIBUTION
- ✓ | Remix Culture allowed
- ✗ | Commercial Use
- ✗ | Free Cultural Works
- ✗ | Meets Open Definition