

Pen holder for Lathe OXA and BXA (Work in Progress)



Bakermonitor1932

[VIEW IN BROWSER](#)

updated 12. 4. 2022 | published 24. 3. 2022

Summary

Usefull for checking thread pitch Or for pen plotting with a quick change tool post. Should fit OXA posts as used in...

[Hobby & Makers](#) > [Tools](#)

Tags: [fusion](#) [storage](#) [tormach](#) [mill](#) [lathe](#) [0xa](#) [250](#) [200](#) [aloris](#) [bxa](#) [oxa](#) [rapidturn](#) [tormachrapidturn](#)

Usefull for checking thread pitch Or for pen plotting with a quick change tool post.

Should fit OXA posts as used in the RapidTurn and other small lathes

BXA version will need post side sanded to match your Quick change post.

Fusion files included.

Haven't tested it yet but it should print with no support or adhesion turned on.

Print Settings

Rafts:

No

Supports:

No

Category: Machine Tools

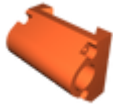
Model files



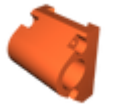
pen_holder_lathe_oxa_v1.f3d



pen_holder_lathe_bxa_v1.f3d



pen_holder_lathe_bxa_v1.stl



pen_holder_lathe_oxa_v1.stl

[Find source .stl files on Thingiverse.com](#)

License ©

This work is licensed under a
Creative Commons (4.0 International License)



Attribution

- ✗ | Sharing without ATTRIBUTION
- ✓ | Remix Culture allowed
- ✓ | Commercial Use

- ✓ | Free Cultural Works
- ✓ | Meets Open Definition