



Wood Glue Holder

3 3DMaker

[VIEW IN BROWSER](#)

updated 28. 3. 2022 | published 28. 3. 2022

Summary

Small shelf designed to hold two bottles of Titebond III glue on a french cleat wall



5.68 hrs



2 pcs



0.20 mm



0.40 mm



PLA



83 g



Prusa
MK3/S/S+

[Hobby & Makers](#) > [Organizers](#)

Tags: [woodworking](#) [organization](#) [frenchcleat](#) [titebond](#)

Note: This is part of the work to overhaul my home workshop infrastructure. The shelf is designed to be made mostly of wood (1/2" **plywood**), with a few 3d printed components.

The support can hold 2 **Titebond III** glue bottles.

You can use the front tip holder stand alone to keep the Titebond bottle upside down so the glue comes out faster when the bottle is almost empty. You don't actually need to build the entire support.

I have attached the Fusion 360 model in case you need to measure wooden parts or if you want to modify it. The french cleat is not present in

the model because I decide where to put it in the workshop, once the shelf is ready.

Note: Take a look at the makes section to see the finished product.

Model files

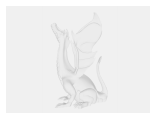


stand-alone-support.3mf



label.3mf

☐ Letters facing down so their faces get the nice pattern from powder coated plate



wood-glue-rack.f3d

☐ Fusion 360 file, for convenience

Print files



stand-alone-support_02mm_pla_mk3s_5h25m.gcode

🌀 PLA 🌀 0.40 mm ≡ 0.20 mm ⌚ 5.42 hrs ⚖️ 81 g 🖨️ Prusa MK3/S/S+

☐ The back support should be glued, the front one should be removable



label_02mm_pla_mk3s_16m.gcode

🌀 PLA 🌀 0.40 mm ≡ 0.20 mm ⌚ 0.26 hrs ⚖️ 2 g 🖨️ Prusa MK3/S/S+

☐ Letters can be super glued to the wood

License ©

This work is licensed under a
[Creative Commons \(4.0 International License\)](#)



Attribution-NonCommercial

- ✗ | Sharing without ATTRIBUTION
- ✓ | Remix Culture allowed
- ✗ | Commercial Use
- ✗ | Free Cultural Works
- ✗ | Meets Open Definition