



Radius Gauges - Inch Imperial

T Techplex

VIEW IN BROWSER

updated 24. 3. 2022 | published 24. 3. 2022

Summary

Need to measure a curve? These Radius Gauges can help you get around the bend



13.39 hrs



3 pcs



0.30 mm



0.40 mm



PET



274 g



Prusa
MK3/S/S+

[Hobby & Makers](#) > [Tools](#)

Based on Clough42's awesome openscad design:
<https://www.thingiverse.com/thing:1646307>

Model files



platter1.3mf



platter2.3mf



platter3.3mf



radiusgauge-inch.scad

Print files



platter2_03mm_petg_mk3s_4h33m.gcode

PET 0.40 mm 0.30 mm 4.55 hrs 92 g Prusa MK3/S/S+



platter1_03mm_petg_mk3s_4h16m.gcode

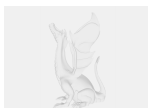
PET 0.40 mm 0.30 mm 4.26 hrs 89 g Prusa MK3/S/S+



platter3_03mm_petg_mk3s_4h35m.gcode

PET 0.40 mm 0.30 mm 4.58 hrs 93 g Prusa MK3/S/S+

Other files



imperialsizes.txt

[Find source .stl files on Thingiverse.com](#)

License

This work is licensed under a
Creative Commons (4.0 International License)



Attribution-ShareAlike

-
- ✗ | Sharing without ATTRIBUTION
 - ✓ | Remix Culture allowed
 - ✓ | Commercial Use
 - ✓ | Free Cultural Works
 - ✓ | Meets Open Definition