



Pet bottle broom



RostaP

[VIEW IN BROWSER](#)

updated 25. 3. 2022 | published 24. 3. 2022

Summary

Broom made of pet bottles. Printed without supports



18.59 hrs



6 pcs



0.20 mm
0.15 mm
0.30 mm



0.40 mm



PET



219 g



Prusa
MK3/S/S+

[Household](#) > [Other House Equipment](#)

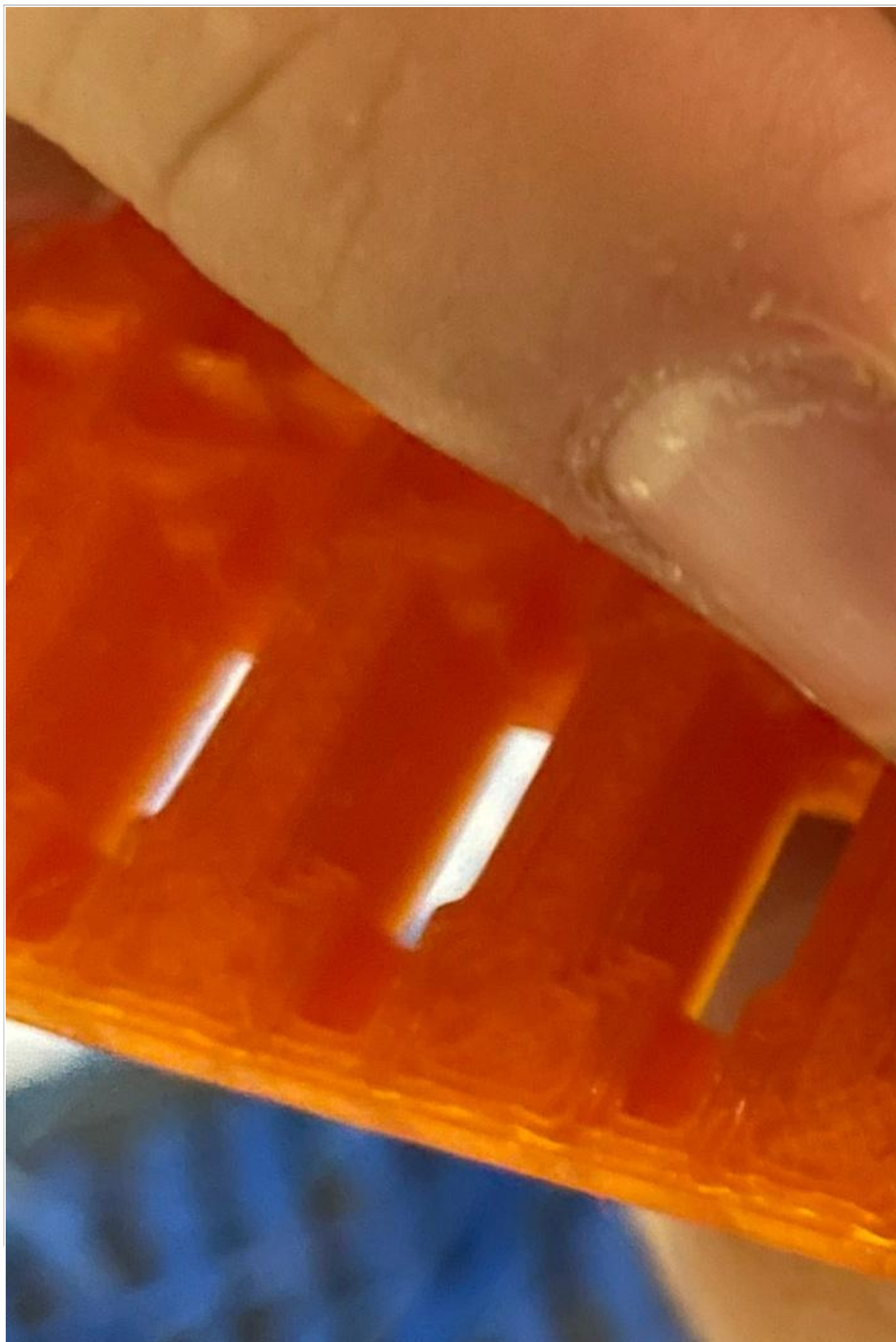
You will need

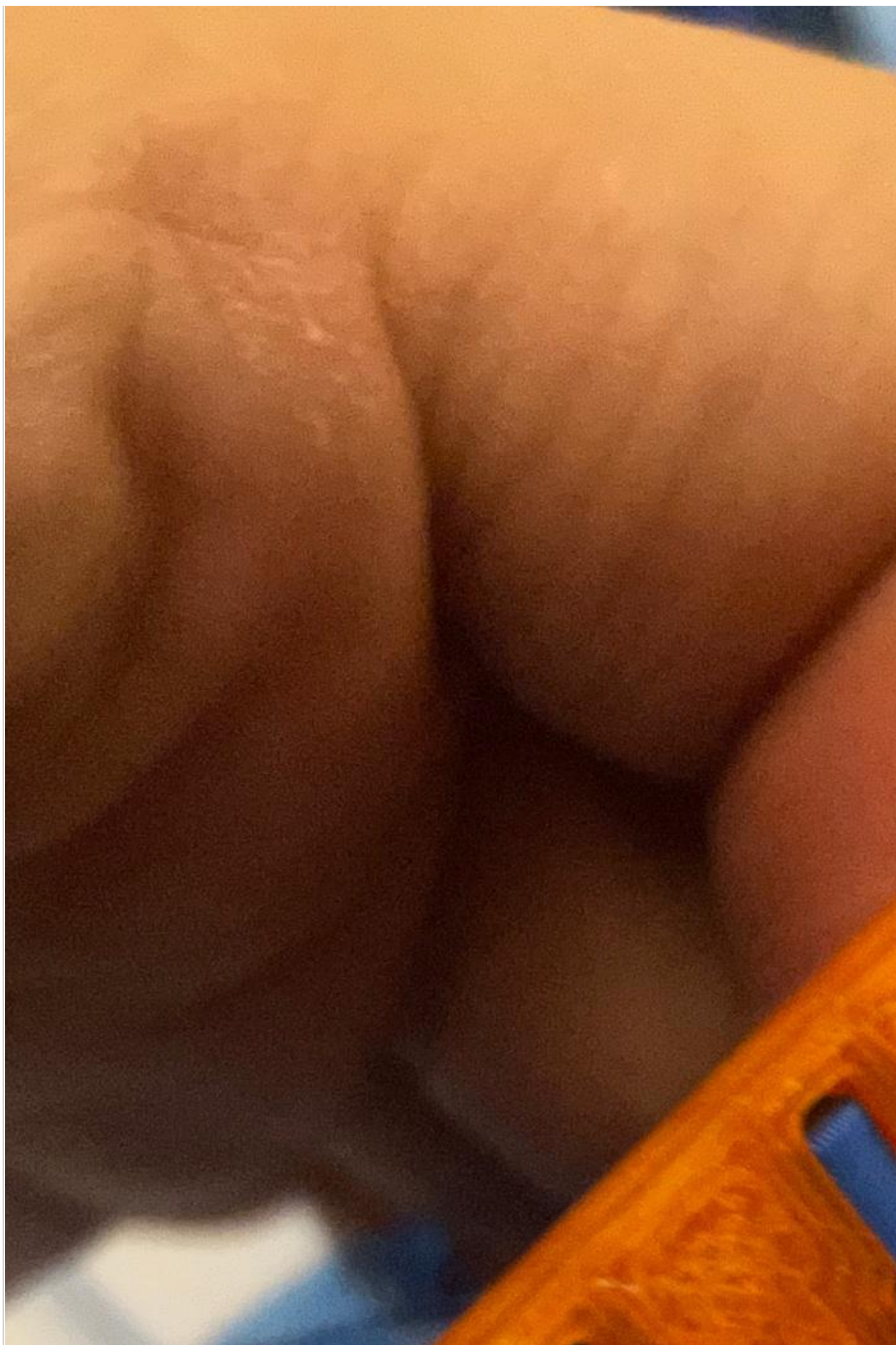
- 5 pet bottle
- 4 x screw M5x12 or M5x14
- 4 x nut M5
- handle

Cut the bottles into a string. I used some printed bottle cutter downloaded from Thingiv

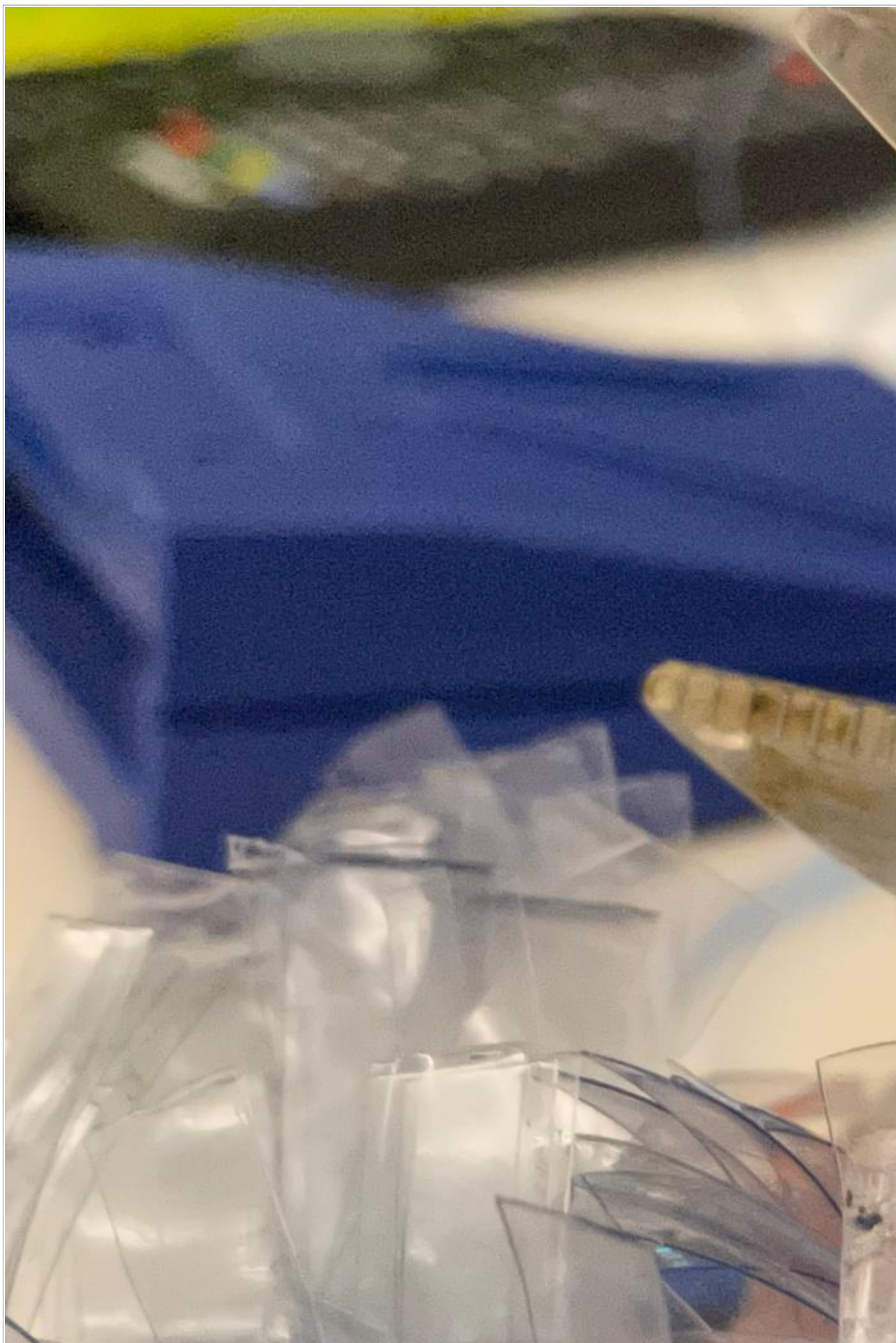


Pass the string through the lower part.





Pull the string down and turn the peg to secure.



Insert nut M5 from inside the cover and slide the cover on

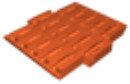


Model files

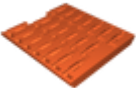


Alternative base for MINI

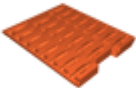
3 files



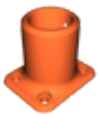
base-alternative-for-small-printer-3_3.stl



base-alternative-for-small-printer-1_3.stl



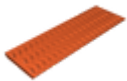
base-alternative-for-small-printer-2_3.stl



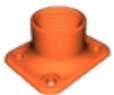
handle-holder.stl



broom-cover.stl



broom-base.stl



handle-holder-thred.stl



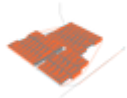
pin.stl

Print files



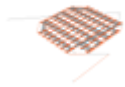
Base for MINI

1 file



base-alternative-for-small-printer_02mm_petg_mi.gcode

PET 0.40 mm 0.20 mm 8.16 hrs 75 g Prusa MINI / MINI+



pin_015mm_petg_mk3s_3h28m.gcode

PET 0.40 mm 0.15 mm 3.47 hrs 20 g Prusa MK3/S/S+



handle-holder-thred_02mm_petg_mk3s_1h26m.gcode

PET 0.40 mm 0.20 mm 1.43 hrs 15 g Prusa MK3/S/S+



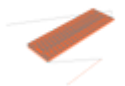
handle-holder_02mm_petg_mk3s_2h8m.gcode

PET 0.40 mm 0.20 mm 2.14 hrs 26 g Prusa MK3/S/S+



cover_03mm_petg_mk3s_5h41m.gcode

PET 0.40 mm 0.30 mm 5.68 hrs 112 g Prusa MK3/S/S+



base_02mm_petg_mk3s_8h1m.gcode

PET 0.40 mm 0.20 mm 8.01 hrs 72 g Prusa MK3/S/S+

License

This work is licensed under a
[Creative Commons \(4.0 International License\)](https://creativecommons.org/licenses/by/4.0/)



Attribution

- ✘ | Sharing without ATTRIBUTION
- ✓ | Remix Culture allowed
- ✓ | Commercial Use
- ✓ | Free Cultural Works
- ✓ | Meets Open Definition