



Box with Shutter Lid



Wiseone

[VIEW IN BROWSER](#)

updated 14. 10. 2023 | published 14. 10. 2023

Summary

A box with a shutter lid that conveniently slides away into the box itself, hence not having the box and lid separated.

[Hobby & Makers](#) > [Organizers](#)

Tags: [box](#) [shutter](#)

Here is a box with a shutter lid. The lid conveniently slides away into the box itself, hence not having the box and lid separated; no lost lid!

This is my 3D design of the box for 3D printing. The design comes in 3 pieces, the base, a side wall and the sliding shutter. Internal box dimensions: 100 x 60 x 37.5mm. The parts are held together by two countersunk 6G (3.5mm) x 15mm self tapping screws.

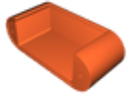
My print is made in PRUSA PLA 1.75mm Silver and 3DFillies PLA+ Silk White filaments, with 0.2mm layer height and 100% infill on a PRUSA I3 MK3S printer. No supports are required.

I hope you can find this print useful, too.

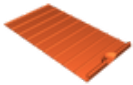
Model files



side-piece.stl



base.stl



flexible-shutter.stl

License ©



This work is licensed under a
[Creative Commons \(4.0 International License\)](https://creativecommons.org/licenses/by-nc/4.0/)

Attribution-NonCommercial

- ✗ | Sharing without ATTRIBUTION
- ✓ | Remix Culture allowed
- ✗ | Commercial Use
- ✗ | Free Cultural Works
- ✗ | Meets Open Definition