

## Prusa MK3 Extruder Cable Cover

 **Sad Money**

[VIEW IN BROWSER](#)

updated 25. 12. 2019 | published 25. 12. 2019

### Summary

I end up tinkering with my machine a lot which means that I go through a lot of zipties when I need to mess with the...

[3D Printers](#) > [3D Printers - Upgrades](#)

Tags: [extruder](#) [mk3](#) [cable](#) [prusamk3](#)

I end up tinkering with my machine a lot which means that I go through a lot of zipties when I need to mess with the wiring. Got tired of wasting all those zipties so I designed this cable cover. It uses two m3x10 screws and two nuts to go with them.

The textile sleeve makes screwing the two halves together a little tricky, but there shouldn't be any trouble fitting all the wires in; I designed it with a little extra room on the inside so after its on you should be able to slide the whole thing up and down a bit to make sure everything is fitting comfortably.

There are two bumps on the inside of either half that are meant to catch the notches where the zipties would normally go so it doesn't slide backwards.

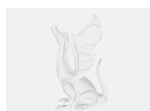
I could never seem to get the textile sleeve to look clean when I had it ziptied with the heater cartridge and thermistor cables going in through

the bottom, so this solves that problem too. The sleeve should stop just before the piece that sticks out.

## Model files



**extruder-cable-cover-v4-left.stl**



**extruder-cable-cover-v4.step**



**extruder-cable-cover-v4-right.stl**

## License ©

This work is licensed under a  
[Creative Commons \(4.0 International License\)](https://creativecommons.org/licenses/by-nc/4.0/)



**Attribution-NonCommercial**

- 
- ✗ | Sharing without ATTRIBUTION
  - ✓ | Remix Culture allowed
  - ✗ | Commercial Use
  - ✗ | Free Cultural Works
  - ✗ | Meets Open Definition