



Key



Rjene

[VIEW IN BROWSER](#)

updated 28. 3. 2022 | published 25. 3. 2022

Summary

PARAMTERIC functional Key for unlocking YOUR house door.



0.44 hrs



1 pcs



0.15 mm



0.40 mm



PLA



3 g



Prusa
MK3S/S+ &
MMU2S

[Hobby & Makers](#) > [Mechanical Parts](#)

With measuring a key the lock was opened in a first try.

I printed with soluble support. Probably would go without support, but i had problem that key on a small surface didnt stick to a bed.

My plan was to make a Photo and make a measures from it, putting a measures in a parametric model and print a key. I didnt try it yet. Is that legal to suggest?:)

There are three Possibilitys to print:

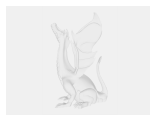
1. You download STEP ("Key_1.STEP" in a "Key_1.zip") and in a program for 3d modeling you position "Cut_out parts" in the same position like they are on your key. Now they are all 10mm away from upper site. Than you just CUT OUT a CUT_OUT_PARTS, save like STL and you are ready to print.

2. You download STL/3MF and go to your slicer. You can see there are additional parts that can make a NEGATIVE VOLUME. Now they are all 10mm away from upper site. You change the position like on your key and print it. (see "Key_plan_Slicer.jpeg" to see how it looks in prusa slicer)

3. You can download my_Key_1.stl and print it:) It is a key to my House.

The button spikes are not strong, so i suggest rounding. You can see on my pictures they gone pretty fast, but no problem with opening of a lock.

Model files



key_1.stp



key_1.3mf



my_key_1.stl



key_1.stl

Print files



key_1_015mm_pla_mk3smmu2s_26m.gcode

⚙️ PLA ⚙️ 0.40 mm ⚙️ 0.15 mm ⌚ 0.44 hrs ⚖️ 3 g

🖨️ Prusa MK3S/S+ & MMU2S

License

This work is licensed under a
Creative Commons (International License)



Public Domain

- ✓ | Sharing without ATTRIBUTION
- ✓ | Remix Culture allowed
- ✓ | Commercial Use
- ✓ | Free Cultural Works
- ✓ | Meets Open Definition