



## Pokeball glowing wled or led



Satellietje

[VIEW IN BROWSER](#)

updated 25. 3. 2022 | published 25. 3. 2022

### Summary

Pokeball glowing wled or led

[Household](#) > [Home Decor](#)

Tags: [prusa](#) [decoration](#) [led](#) [multicolor](#) [pokemon](#) [present](#)  
[pokeball](#) [ball](#) [figure](#) [birthday](#) [gift](#) [neopixel](#) [action](#)  
[child](#) [wled](#) [actionfigure](#)

Fits in the project Glowing LED and WLED all alphabet letters and all numbers 10 cm high.  
<https://www.prusaprinters.org/prints/149829-glowing-led-and-wled-all-alphabet-letters-and-all->

**You are doing me a big favor by clicking the Like button :-)**

Shopping list for use with WS2812B leds  
WS2812B **RGBW** Led (AliExpress) (Not the RGB. The RGBW **W** is for cool white)  
Wemos D1 Mini V3.0.0 (AliExpress)  
Wire thin 28AWG (AliExpress)  
Black Filament - Sunlu Black  
Warm white Filament - E-Sun white-B (Not Snowwhite)  
Solder tin

Glue

5 Volt usb micro adapter

Print the Pokeball in black or other non-translucent color.

Diffuser warm white or white, for example, Esun white-b.

Print only the parts that you need.

Put some glue on the edge of the lens, and place the lens in the letter press firmly.

If there is a mistake let me know and I fix it.

For questions send me a message. I would like to help you make this beautiful project ;-)

Programming the Wemos

its very simple, look here:

<https://kno.wled.ge/basics/install-binary/>

Method 3: ESP Home Flasher tool

Link to the flasher:

<https://github.com/esphome/esphome-flasher/releases>

Link to the bin file:

<https://github.com/Aircoookie/WLED/releases>

Open the ESPHome-Flasher-1.4.0-Windows-x64.exe

1. Choose the comport that your WEMOS is on
2. Browse in the flasher to WLED\_\*\*\*\*.bin
3. Click on Flash Esp

Thats it

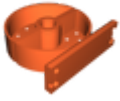
If you don't want to use the WS2812B, you can also use a normal diffused 5 mm LEDs.

An adapter is included for this.

In my previous project there are pictures about the LEDs and the connections:

<https://www.prusaprinters.org/prints/109865-glowing-wled-or-led-all-alphabet-letters-and-all-n>

# Model files



**pokeball.stl**



**pokeball-diffuser.stl**



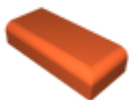
**pokeball-diffuser-use-support.stl**



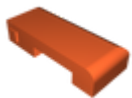
**pokeball-back.stl**



**closing-cap.stl**



**side-left.stl**



**side-right.stl**



**adapter.stl**



**coupler.stl**

# License

This work is licensed under a  
**Creative Commons (4.0 International License)**



**Attribution—Noncommercial—No Derivatives**

---

- ✕ | Sharing without ATTRIBUTION
- ✕ | Remix Culture allowed
- ✕ | Commercial Use
- ✕ | Free Cultural Works
- ✕ | Meets Open Definition