

Heat set Insert Press for Pinecil



Kozova1

[VIEW IN BROWSER](#)

updated 25. 3. 2022 | published 25. 3. 2022

Summary

This will allow you to use your 2020 Aluminum extrusion based printer as a heat set insert press

[3D Printers](#) > [Accessories](#)

Tags: [press](#) [matrix](#) [ender3](#) [2020extrusion](#) [heatsetinsert](#)
[pinecil](#) [heatsetinserts](#) [matrixlite](#)

This will allow you to use your 2020 Aluminum extrusion based printer as a heat set insert press.

To use this, you'll need additionally:

- 1 Pinecil with a conical tip (the one included is good)
- 2 M3x8 Screws (4 M3X6/M3X5 for matrix lite mount)
- 2 M3 T-nuts (not needed for matrix lite mount)

Print settings: All walls, max layer height for your nozzle. Print from a strong material.

Print in the specified orientation and clean up the M3 holes

You might have to scale this slightly, depending on your printer's tolerances.

If you want to, you can print a printhead adapter too, this will allow you to use your machine for CNC Heat Set Insert insertion. Be careful when homing!

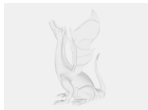
Model files



pineciladapter-v3.stl



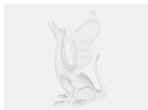
pineciladapter-v3.step



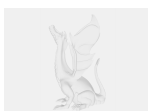
pineciladapter-v3.f3d



matrix-lite-adapter-v3.stl



matrix-lite-adapter-v3.step



matrix-lite-adapter-v3.f3d

License ©

This work is licensed under a
[Creative Commons \(4.0 International License\)](https://creativecommons.org/licenses/by-sa/4.0/)



Attribution-ShareAlike

- ✘ | Sharing without ATTRIBUTION
- ✓ | Remix Culture allowed
- ✓ | Commercial Use
- ✓ | Free Cultural Works
- ✓ | Meets Open Definition