



Prusa I3 MK3S MMU2S with Bondtech BMG MK3 adaptation



Tocache

[VIEW IN BROWSER](#)

updated 12. 4. 2022 | published 26. 12. 2019

Summary

This is a compilation of things in order to upgrade (or build) your Prusa I3 MK3S with MMU2S and Bondtech BMG extruder...

[3D Printers](#) > [3D Printers - Upgrades](#)

Tags: [prusa](#) [prusai3](#) [bondtech](#) [originalprusai3mk3](#) [mmu2](#)
[carrier](#) [prusai3mk3s](#) [prusai3mk3smmu2s](#) [prusai3mk3mmu2](#)
[curtain](#) [bondtechbmg](#) [bondtechbmgextruder](#) [curtainstopper](#)
[curtainrail](#) [curtainrailstop](#) [curtainrailstopper](#)

This is a compilation of things in order to upgrade (or build) your Prusa I3 MK3S with MMU2S and Bondtech BMG extruder kit for MK3.

I used the Bear X-Carriage with an adaptation for the Bondtech extruder and MK3S filament sensor (source: <https://www.thingiverse.com/thing:3560116>).

Also put here a cover for the laser sensor compartment of the Bondtech BMG extruder as the filament sensor is mounted on the door on the MK3S

MMU2S adaptation (source: <https://www.myminifactory.com/object/3d-print-prusa-laser-sensor-delete-93976>)

The filament sensor is mounted on the extruder gear door (source: <https://www.thingiverse.com/thing:3565326>), but I remixed the 10mm top plate cover in order to remove two chamfer on two sides, now it looks better.

Print instructions Category: 3D Printer Extruders Print Settings

Printer Brand: Prusa

Printer: I3 MK3S

Rafts: No

Supports: Yes

Resolution: 0.2mm

Infill: 40%

Filament: Generic ABS and PETG Black

Model files



x-carriage_back_bottom_103b_mk3_bondtechbear_154.stl



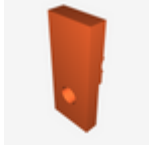
x-carriage_104a_bondtechbear_mk3s-addon_15468.stl



x-cableguide-a_12_bondtechbear_15468.stl



x-carriage_back_top_102_bondtechbear_15468.stl



pr-laser-sensor_15468.stl



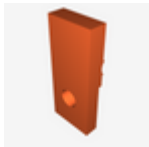
x-cableguide-b_12_bondtechbear_15468.stl



sensorcoverlatch_15468.stl



bondtech_hinge_tab_15468.stl



pr-laser-sensor.stl



x-carriage_back_top_102_bondtechbear.stl



sensorcoverlatch.stl



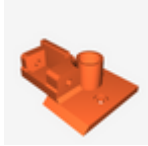
x-carriage_104a_bondtechbear_mk3s-addon.stl



x-carriage_back_bottom_103b_mk3_bondtechbear.stl



bondtech_hinge_tab.stl



topplate_10mm_v4.stl



x-cableguide-a_12_bondtechbear.stl



x-cableguide-b_12_bondtechbear.stl

[Find source .stl files on Thingiverse.com](#)

License

This work is licensed under a
Creative Commons (4.0 International License)



Attribution

- ✗ | Sharing without ATTRIBUTION
- ✓ | Remix Culture allowed
- ✓ | Commercial Use
- ✓ | Free Cultural Works
- ✓ | Meets Open Definition