



Pedelec E-Bike Accu Wall Hanger



laberlaib

[VIEW IN BROWSER](#)

updated 25. 3. 2022 | published 25. 3. 2022

Summary

Wall Hanger for your E-Bike/Pedelec Accu

[Sports & Outdoor](#) > [Outdoor Sports](#)

Tags: [bike](#) [ebike](#) [wallhanger](#)

I needed a place to store the battery, the computer and the keys of my e-bike / pedelec together.

So I designed this.

The top needs to be glued, the arms fit very tight because i tried to make them hold w/o glue. Perhaps you need to sand them a little or cut a little of.

This is my first own design which is a little more complicated, so be aware that there is room for lot of improvements, but for me it works.

Model files



pedelecbatterywallhangertop.stl



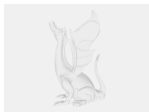
pedelecbatterywallhangermain.stl



pedelecbatterywallhangerarmleft.stl



pedelecbatterywallhangerarmright.stl



pedelecbatterywallhanger.fcstd

License ©

This work is licensed under a
[Creative Commons \(4.0 International License\)](https://creativecommons.org/licenses/by/4.0/)



Attribution

- ✗ | Sharing without ATTRIBUTION
- ✓ | Remix Culture allowed
- ✓ | Commercial Use
- ✓ | Free Cultural Works
- ✓ | Meets Open Definition