

Tekonsha Primus IQ mounting bracket



ksanislo

[VIEW IN BROWSER](#)

updated 12. 4. 2022 | published 25. 3. 2022

Summary

I needed a mounting bracket for a Tekonsha Primus IQ brake controller. The Primus IQ is an older style than the more...

[Hobby & Makers](#) > [Automotive](#)

I needed a mounting bracket for a Tekonsha Primus IQ brake controller. The Primus IQ is an older style than the more common Tekonsha Prodigy brake controller series, and uses a slightly different mounting tab setup. Since there were no existing models available, I produced this quick sketch in FreeCAD to fit my needs.

It could be prettier, it could be fancier, but this is enough to hold your brake controller nice and secure.

Print Settings

Printer Brand:

Creality

Printer:

Ender 5

Rafts:

No

Supports:

Yes

Resolution:

0.20 mm

Infill:

40%

Filament: Gizmo Dorks ABS Sky Blue

Notes:

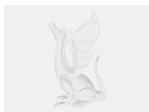
Supports are required for the mounting tabs, but otherwise this is a pretty straight forward print.

Category: Automotive

Model files



tekonsha_primus_iq_bracket_v1.stl



tekonsha_primus_iq_bracket.fcstd

[Find source .stl files on Thingiverse.com](#)

License ©

This work is licensed under a
[Creative Commons \(4.0 International License\)](#)



Attribution

- ✘ | Sharing without ATTRIBUTION
- ✓ | Remix Culture allowed
- ✓ | Commercial Use
- ✓ | Free Cultural Works
- ✓ | Meets Open Definition