

Dog Bag Holder



Zemba Craftworks

[VIEW IN BROWSER](#)

updated 12. 4. 2022 | published 25. 3. 2022

Summary

This is an original design based mostly on philwaud's concept. I wanted more secure threads without the slit extending...

[Household](#) > [Pets](#)

Tags: [dog](#) [poop](#) [dogpoopbags](#) [dogs](#) [dogpoop](#) [leash](#)
[dogleash](#)

This is an original design based mostly on [philwaud's concept](#). I wanted more secure threads without the slit extending through the top, so this is what I came up with.

The hole is intended so you can "clip" the bag into the top or bottom recess. Also, it's easier to feed the bags through the hole before you put the spool in rather than trying to fish them out through the hole.

Update: Added the original .ipt files as well as .stp if you'd like to modify the design to better fit your leash.

Print Settings

Printer Brand:

RepRap

Printer:

Prusa i3

Rafts:

No

Supports:

No

Resolution:

0.3mm

Infill:

30

Category: Pets

Model files



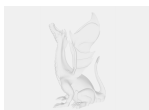
dog_bag_holder_cap.stp



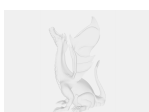
dog_bag_holder_bottom.ipt



dog_bag_holder_cap.stl



dog_bag_holder_cap.ipt



dog_bag_holder_bottom.stp



dog_bag_holder_bottom.stl

[Find source .stl files on Thingiverse.com](#)

License ©

This work is licensed under a
Creative Commons (4.0 International License)



Attribution

- ✗ | Sharing without ATTRIBUTION
- ✓ | Remix Culture allowed
- ✓ | Commercial Use
- ✓ | Free Cultural Works
- ✓ | Meets Open Definition