

ISD1820 Recording / Speaker Module PCB Placeholder



Zemba Craftworks

[VIEW IN BROWSER](#)

updated 12. 4. 2022 | published 25. 3. 2022

Summary

This is a placeholder you can print and/or incorporate into your models in place of an ISD1820 recording/playback...

[Hobby & Makers](#) > [Electronics](#)

Tags: [replica](#) [board](#) [dimensions](#) [recording](#) [record](#) [speaker](#) [module](#) [pcb](#) [size](#) [loudspeaker](#) [circuit](#) [circuitboard](#) [printedcircuitboard](#) [copy](#) [voice](#) [isd1820](#) [placeholder](#)

This is a placeholder you can print and/or incorporate into your models in place of an ISD1820 recording/playback module PCB. Useful for planning or test-fitting the module into your prints or other projects.

There are many variants of the ISD1820 and similar recording modules available online, but this is the one I used for this design: <https://www.amazon.com/gp/product/B01I37DBNE>

OpenSCAD file is included if you want to modify the geometry.

Print Settings

Printer Brand:

Prusa

Printer:

Prusa Clone

Rafts:

No

Supports:

No

Resolution:

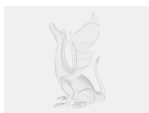
0.3

Infill:

20

Category: Electronics

Model files



isd1820.scad



isd1820.stl

[Find source .stl files on Thingiverse.com](https://www.thingiverse.com/thing/1820)

License ©

This work is licensed under a
Creative Commons (4.0 International License)



Attribution

- ✗ | Sharing without ATTRIBUTION
- ✓ | Remix Culture allowed
- ✓ | Commercial Use
- ✓ | Free Cultural Works
- ✓ | Meets Open Definition