



## Timelapse Clock Holder for Prusa I3 MK3S



dancan13f

[VIEW IN BROWSER](#)

updated 12. 4. 2022 | published 25. 12. 2019

### Summary

This is a Timelapse Clock Holder for Prusa I3 MK3S. It is fixed on the X axis.

[3D Printers](#) > [Accessories](#)

Tags: [prusai3](#) [holder](#) [clock](#) [timelapse](#)

This is a Timelapse Clock Holder for Prusa I3 MK3S.  
It is fixed on the X axis.

The button is designed by Stebo : <https://www.thingiverse.com/thing:1570116>

### Print Settings

1 x TimelapseClockHolder1 : Layer:0.20mm Raft:no Support:yes Infill:100%  
1 x TimelapseClockHolder2 : Layer:0.20mm Raft:no Support:no Infill:100%  
1 x TimelapseClockHolderButton : Layer:0.20mm Raft:no Support:no Infill:20%  
1 x TimelapseClockHolderButtonCap : Layer:0.20mm Raft:no Support:no Infill:100%

### Accessories

1 x m6x45mm Hex Head  
1 x m6 jam nut

2 x m4x8mm SHCS  
1 x m2x12mm SHCS  
1 x m2 jam nut

The clock must be 90mm in diameter and 20mm to 40mm deep.

## Mounting

Mount the clock into TimelapseClockHolder2 with m2x12mm SHCS and m2 jam nut.

Fix the TimelapseClockHolder1 on the X axis with the two m4x8mm SHCS ; threaded holes already exist on the X end idler. It is useless to squeeze hard.

Put the m6 screw in the TimelapseClockHolderButton.

Put the TimelapseClockHolderButtonCap on the TimelapseClockHolderButton.

Insert the TimelapseClockHolder2 on TimelapseClockHolder1 and fix them with the TimelapseClockHolderButton and the m6 jam nut.

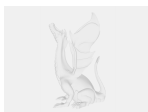
## Print instructions Category: 3D Printer Accessories Print Settings

**Printer Brand:** Prusa

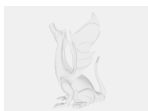
**Printer:** I3 MK3S

**Filament:** BQ PLA Turquoise

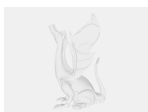
## Model files



**large\_display\_timelapseclockholder1\_15516.stl**

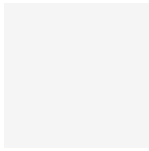


**large\_display\_timelapseclockholder2\_15516.stl**



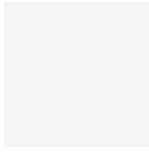
**large\_display\_timelapseclockholderbutton\_15516.stl**

---



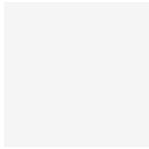
**small\_display\_topswitch.obj**

---



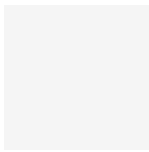
**small\_display\_bottomswitch.obj**

---



**small\_display\_spring22.obj**

---



**small\_display\_innerswitch.obj**

---



**timelapseclockholderbuttoncap.stl**

---



**timelapseclockholder2.stl**

---



**timelapseclockholder1.stl**

---



**timelapseclockholderbutton.stl**

---

[Find source .stl files on Thingiverse.com](https://www.thingiverse.com)

# License

This work is licensed under a  
**Creative Commons (4.0 International License)**



**Attribution-NonCommercial**

---

- ✗ | Sharing without ATTRIBUTION
- ✓ | Remix Culture allowed
- ✗ | Commercial Use
- ✗ | Free Cultural Works
- ✗ | Meets Open Definition