

TronXY Fan Shroud



Wooddab

[VIEW IN BROWSER](#)

updated 26. 3. 2022 | published 26. 3. 2022

Summary

For TronXY and other similar hotend designs.

[3D Printers](#) > [3D Printers - Upgrades](#)

Tags: [part](#) [hotend](#) [fan](#) [cooling](#) [shroud](#) [tronxy](#)
[partcooling](#) [partcoolingfan](#)

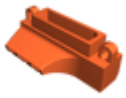
I noticed ender 3 fan shrouds blew a little too close to the heatblock on stock TronXY printers so I designed this to correct that issue.
Let me know how it works for you!

Model files



tronxy-fan-shroud.3mf

☐ No print settings included in file.



tronxy-fan-shroud.stl

☐ Use .3mf if scaling is incorrect.

License ©

This work is licensed under a
Creative Commons (4.0 International License)



Attribution-NonCommercial

- ✗ | Sharing without ATTRIBUTION
- ✓ | Remix Culture allowed
- ✗ | Commercial Use
- ✗ | Free Cultural Works
- ✗ | Meets Open Definition