



***Prop* Peterson System Standard Pipe**



Beb's Repair Bench

[VIEW IN BROWSER](#)

updated 12. 4. 2022 | published 26. 3. 2022

Summary

This is my version of a Peterson System Standard Pipe, it's not a true copy, as I've only seen them in pictures, and I...

[Costumes & Accessories](#) > [Props](#)

This is my version of a Peterson System Standard Pipe, it's not a true copy, as I've only seen them in pictures, and I modeled more by the look than any actual dimensions.

Print Settings

Printer Brand:

Monoprice

Printer:

Select Mini

Rafts:

No

Supports:

Yes

Resolution:

.2mm layer height, .1mm would be better

Infill:

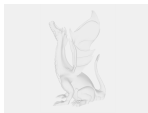
15%

Filament: MG Chemicals and Paramount3D PLA WOOD, Silver Dollar, and Black Finished Pipe =====

The printed with Wood PLA for the Bowl, Silver PLA for the Mount, and Black PLA for the Stem.

Category: Props

Model files



peterson_system_standard_pipe_mount.amf



peterson_system_standard_pipe_bowl.amf



peterson_system_standard_pipe.step



peterson_system_standard_pipe_stem.3mf



peterson_system_standard_pipe_mount.stl



peterson_system_standard_pipe_bowl.stl



peterson_system_standard_pipe_stem.stl



peterson_system_standard_pipe.sldprt



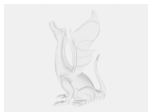
peterson_system_standard_pipe_bowl.3mf



peterson_system_standard_pipe.stl



peterson_system_standard_pipe_mount.3mf



peterson_system_standard_pipe_stem.amf

[Find source .stl files on Thingiverse.com](#)

License

This work is licensed under a
Creative Commons (4.0 International License)



Attribution

- ✗ | Sharing without ATTRIBUTION
- ✓ | Remix Culture allowed
- ✓ | Commercial Use
- ✓ | Free Cultural Works
- ✓ | Meets Open Definition

