

Modular
3D MODEL ONLY
sizes per style
+ Hooks

Perfect for tools +
bedside, bathroom
& kitchen items



Modular Wall Mounted Organizer Shelves



nodin

[VIEW IN BROWSER](#)

updated 27. 3. 2022 | published 27. 3. 2022

Summary

Versatile adhesive mounted modular shelf designs (5cm deep)

[Household](#) > [Home Decor](#)

Tags: [shelf](#) [organizer](#) [bathroom](#) [wallmounted](#)
[kitchenorganizer](#) [bedroom](#)

3D printers are the perfect tool for obsessively organizing your entire life, so I designed a modular set of shelves, hooks and blank plates for different purposes. The drain shelves are perfect for bathrooms and kitchens where things might get a little wet. The charging shelves are perfect for putting devices away while they charge.

The design plates are a remix of a design by [CUBE](#).

NOTE: The dimensions of the shelves are in centimetres and include the 2mm thick walls on each side, so when in doubt go up a size if you can't measure before printing.

Model files



Hooks

4 files



5-x-5-1-hook-plate.stl



10-x-5-2-hook-plate.stl



5-x-10-1-hook-plate.stl

☐ off-center for vertical alignment



10-x-5-1-hook-plate.stl

☐ centered hook



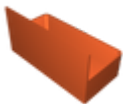
Regular Shelves

7 files



5-x-10-shelf.stl

☐ perfect for car fobs



10-x-5-shelf.stl



10-x-10-shelf.stl



10-x-15-shelf.stl

☐ perfect for wallets

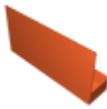


15-x-10-shelf.stl

☐ perfect for wallets



10-x-20-shelf.stl



20-x-10-shelf.stl

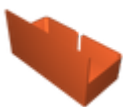


Charging Shelves

7 files



5-x-10-charging-shelf.stl



10-x-5-charging-shelf.stl



10-x-10-charging-shelf.stl

☐ perfect for wireless earbuds



10-x-15-charging-shelf.stl

☐ perfect for phones, especially if a blank plate is above it

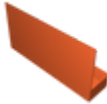


15-x-10-charging-shelf.stl



10-x-20-charging-shelf.stl

☐ perfect for large phones



20-x-10-charging-shelf.stl

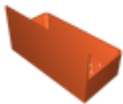


Shelves With Drainage Holes

7 files



5-x-10-drain-shelf.stl



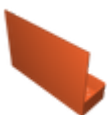
10-x-5-drain-shelf.stl



10-x-10-drain-shelf.stl



10-x-15-drain-shelf.stl



15-x-10-drain-shelf.stl



10-x-20-drain-shelf.stl



20-x-10-drain-shelf.stl



Blank Filler Plates

3 files



5-x-5-blank-plate.stl



5-x-10-blank-plate.stl



10-x-10-blank-plate.stl



5 x 5 Design Plates

9 files



bomb-design-plate.stl

☐ Designed by CUBE



cat-design-plates.stl

☐ Designed by CUBE



ninja-shuriken-design-plate.stl

☐ Designed by CUBE



skull-design-plate.stl

☐ Designed by CUBE



cog-design-plate.stl

☐ Designed by CUBE



steering-wheel-design-plate.stl

☐ Designed by CUBE



sakura-flower-design-plate.stl

☐ Designed by CUBE



frangipani-flower-design-plate.stl

☐ Designed by CUBE



daisy-flower-design-plate.stl

☐ Designed by CUBE

License

This work is licensed under a
Creative Commons (4.0 International License)



Attribution-ShareAlike

- ✘ | Sharing without ATTRIBUTION
- ✓ | Remix Culture allowed
- ✓ | Commercial Use
- ✓ | Free Cultural Works
- ✓ | Meets Open Definition