

IKEA Lack MK3S Black PSU Holder

Majed

[VIEW IN BROWSER](#)

updated 27. 3. 2022 | published 27. 3. 2022

Summary

IKEA Lack Holder for MK3S Black PSU



6.52 hrs



2 pcs



0.30 mm



0.40 mm



PLA
PET



132 g



Prusa
MK3/S/S+

[3D Printers](#) > [Accessories](#)

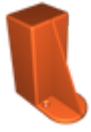
Tags: [ikea](#) [psu](#) [holder](#) [black](#) [mk3s](#) [lack](#)

IKEA Lack Holder for MK3S Black PSU.

Print as the orientation in the 3mf file, no supports needed.

For an accurate fit, the left hole is 11 mm from the left leg edge, and the right hole is 44 mm from the left leg edge. The 2 holes are 243 mm below the top edge of the lack.

Model files



ikea-lack-mk3s-psu-holder.3mf

Print files



ikea-lack-mk3s-psu-holder_pla_3h14m.gcode

🌀 PLA 📏 0.40 mm 📏 0.30 mm ⌚ 3.24 hrs ⚖️ 67 g 🖨️ Prusa MK3/S/S+



ikea-lack-mk3s-psu-holder_petg_3h17m.gcode

🌀 PET 📏 0.40 mm 📏 0.30 mm ⌚ 3.28 hrs ⚖️ 65 g 🖨️ Prusa MK3/S/S+

License ©

This work is licensed under a
[Creative Commons \(International License\)](#)



Public Domain

- ✓ | Sharing without ATTRIBUTION
- ✓ | Remix Culture allowed
- ✓ | Commercial Use
- ✓ | Free Cultural Works
- ✓ | Meets Open Definition