

Customizable Nozzle Box!



Joseph Clarke

[VIEW IN BROWSER](#)

updated 27. 3. 2022 | published 27. 3. 2022

Summary

Tired of printing nozzle box's that don't fit your nozzles or simply have too many spaces and waste lots of filament?

[3D Printers](#) > [Accessories](#)

Tags: [prusa](#) [box](#) [nozzle](#) [volcano](#) [storage](#) [customizable](#) [ender](#) [accessory](#) [customizer](#) [3dprinter](#) [openscad](#) [3dprinterparts](#) [revo](#) [supervolcano](#) [acesories](#) [printers](#) [cht](#) [presets](#)

Introduction

Wanted to design an easily customizable nozzle box for those without CAD skills or who simply don't want to mess with designing something from scratch. I tried to include all the basic settings and some more advanced settings to help people with more specific needs or artistic flairs.

How To Use

- [Download](#) openSCAD
- Download the print files, make sure you extract all .scad files into the same directory
- Open NozzleBox.scad with openSCAD

- Set your settings in the right hand pane (there are several sections which you can expand by clicking the little arrow)
- Press F6 to render the model (Depending on the complexity it could take several minutes)
- Press F7 to save as an stl
- Alternately use one of the (most less than practical) presets
- Enjoy!

Note: Depending on your design I recommend flipping the lid in your slicer such that the top is facing the build plate, otherwise you will most likely need to use supports.

Features

- Setting the number of rows and nozzles in each row
- Custom labels for each row that automatically scale to fit with customizable fonts, sizes and height/indentation. Up to 16 unique rows are currently supported so go crazy and collect all the weirdest nozzles you can find!
- Hexagon or circle shaped cut-outs so you can fit the nozzle into the box in whatever orientation you'd like
- Customizable nozzle holes, spacing and clearance height so you can fit anything from V6, CR-10, Revo to Volcano and Super Volcano Nozzles
- Multiple included lid designs, which can all be customized to your liking
- Support for using an SVG or DXF design for the lid which can be scaled and moved around within openSCAD
- Full control over thicknesses, tolerances and depths of ALL parts so no matter your printers capability you can print the box of your liking
- A nameplate in the center of the lid (which can be disabled for a cleaner look) which you can, of course, customize in any way you wish from font to size to height
- Most importantly the freedom to make whatever goofy box you'd like! A box for fitting a single super volcano nozzle, yup; 100 nozzles each each size, sure; a box with a giant turd design on the lid, why not heck you can even make a simple practical box, Imagine that!

Troubleshooting

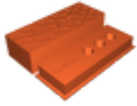
If the lid fits too loose or too tight try changing the “lidTolerance” variable under the “Advanced” section.

Conclusion

I hope someone gets some use out of this and makes something unique, I'd love to see your designs!

If you have any other issues or suggestions let me know in the comments and I'll be happy to add/help with them

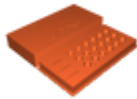
Model files



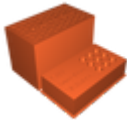
the_cheap skate.stl



the_filament_waster.stl



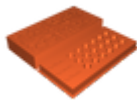
the_hipster.stl



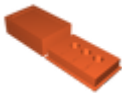
the_speedy_boi.stl



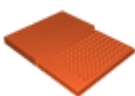
fontmetrics.scad



the_eccentric.stl



the_minimalist.stl



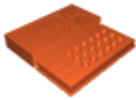
the_overkill.stl



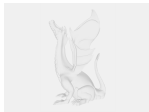
the_collector.stl



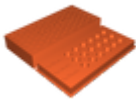
fontmetricsdata.scad



the_artist.stl



nozzlebox.scad



default.stl

Other files



example.svg

License

This work is licensed under a
Creative Commons (4.0 International License)



Attribution-ShareAlike

-
- ✗ | Sharing without ATTRIBUTION
 - ✓ | Remix Culture allowed
 - ✓ | Commercial Use

- ✓ | Free Cultural Works
- ✓ | Meets Open Definition