



Organizational Tray for Original Prusa i3 MK3 (Two Versions)



Jake

[VIEW IN BROWSER](#)

updated 27. 3. 2022 | published 27. 3. 2022

Summary

Two versions (large and small) of an organizational tray that fits above the power supply.



5.55 hrs



3 pcs



0.20 mm



0.40 mm



PLA



56 g



Prusa
MK3/S/S+

[3D Printers](#) > [Accessories](#)

Tags: [prusa](#) [tray](#) [organization](#)

A simple tray to hold the leftover items after assembling the Prusa i3 MK3S+ with slots specifically for the glue stick, lube tube, USB cable, hex keys, and nozzle needle. Secures to the frame and power supply with a removable locking insert.

V1.0 is larger with 7 slots and V1.5 is smaller with 5. The locking insert is the same for both and should be printed with a brim.

I printed the tray 0.20mm Quality settings, 15% infill.

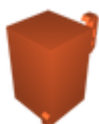
Should be printed in the same orientation as used, facing up.

Model files



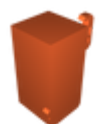
locking_insert.stl

☐ Usable for both versions, print with brim



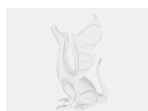
organizational_tray_v15.stl

☐ Smaller tray with 5 slots

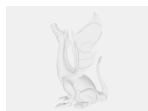


organizational_tray_v10.stl

☐ Larger tray with 7 slots



locking_insert.sldprt



organizational_tray_v15.sldprt

Print files



organizational_tray_v15_02mm_pla_mk3s_5h29m.gcode

PLA 0.40 mm 0.20 mm 5.49 hrs 55 g Prusa MK3/S/S+



locking_insert_02mm_pla_mk3s_4m.gcode

PLA 0.40 mm 0.20 mm 0.06 hrs 1 g Prusa MK3/S/S+



organizational_tray_v10_02mm_pla_mk3s_6h50m.gcode

🌐 PLA 🌀 0.40 mm ≡ 0.20 mm ⌚ 6.84 hrs ⚖️ 70 g 🖨️ Prusa MK3/S/S+

License ©

This work is licensed under a
[Creative Commons \(International License\)](#)



Public Domain

- ✓ | Sharing without ATTRIBUTION
- ✓ | Remix Culture allowed
- ✓ | Commercial Use
- ✓ | Free Cultural Works
- ✓ | Meets Open Definition