



## Cable Holder



Jim

[VIEW IN BROWSER](#)

updated 27. 3. 2022 | published 27. 3. 2022

## Summary

Simple cable holder that is dividable to insert a premade cable into.



0.42 hrs



1 pcs



0.20 mm



0.40 mm



PLA



4 g



Prusa  
MK3/S/S+

[Hobby & Makers](#) > [Organizers](#)

Tags: [cable](#) [cablemanagement](#)

I needed a way to hand a premade charging cable on the wall next the device it would occasionally charge. The issue with some holders is that they did not allow a premade cable to be used.

I liked the overall design of edmar's, but I needed to split it in half so the cable could be inserted. For my use, I also opted to forgo the saddleback design.

I have included the Fusion 360 source file along with a STEP file in case anyone needs to further tweak the design or tolerances.

The included 3mf file is printed with 100% infill and supports for the area where the recessed screw head will go. Any infill should work, but as the

part is so small, I just made it solid. Supports are not entirely needed either as the only place the support is needed is for the screw head recess and that will be hidden by the screw when installed.

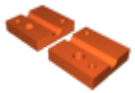
## This remix is based on



### Cable holder

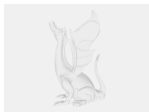
by edmar

## Model files



### cable-holder.3mf

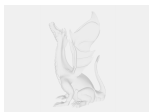
0.20mm Quality with 100% infill and supports



### cable-holder-lower-body.obj



### cable-holder-top-body.obj



### cable-holder.f3d

Fusion 360 source file



### cable-holder.step

STEP source file from Fusion 360

# Print files



## cable-holder\_02mm\_pla\_mk3s\_25m.gcode

⚙️ PLA ⚙️ 0.40 mm ⚙️ 0.20 mm ⌚ 0.42 hrs ⚖️ 4 g 🖨️ Prusa MK3/S/S+

📄 GCode with 100% infill and supports for the screw head recess.

# License ©

This work is licensed under a  
[Creative Commons \(4.0 International License\)](#)



**Attribution—Noncommercial—Share Alike**

- 
- ✗ | Sharing without ATTRIBUTION
  - ✓ | Remix Culture allowed
  - ✗ | Commercial Use
  - ✗ | Free Cultural Works
  - ✗ | Meets Open Definition