



Extra Large, Snap-Lid, Print-in-Place Nozzle Box



Tate

[VIEW IN BROWSER](#)

updated 27. 3. 2022 | published 27. 3. 2022

Summary

For when you buy way too many cheap nozzles and need a place to organize them



5.81 hrs



1 pcs



0.20 mm



0.40 mm



PET



82 g



Prusa
MK2.5S &
MMU2S

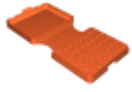
[3D Printers](#) > [Accessories](#)

Tags: [printinplace](#) [nozzleholder](#) [nozzlebox](#)

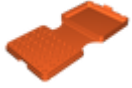
This was inspired by this parametric nozzle box design on Thingiverse by Skaaj4: <https://www.thingiverse.com/thing:1563872>

I recommend printing in PETG, no supports needed. You may need to crease the hinge slightly to get it to stay folded and not try and pry itself open from the back (you can kind of see where I did this on the picture of it open).

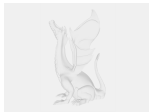
Model files



nozzle-box.stl



nozzle-box-with-some-default-settings.3mf



nozzle-box.sldprt



nozzle-box.step

Print files



nozzle-box_02mm_petg_mk25smmu2s_5h49m.gcode

🌀 PET 📏 0.40 mm 📐 0.20 mm ⌚ 5.81 hrs ⚖️ 82 g

🖨️ Prusa MK2.5S & MMU2S

License ©



This work is licensed under a
Creative Commons (4.0 International License)

Attribution-NonCommercial

- ✗ | Sharing without ATTRIBUTION
- ✓ | Remix Culture allowed
- ✗ | Commercial Use
- ✗ | Free Cultural Works
- ✗ | Meets Open Definition

