



Lithophane tealight holder



Jack104

[VIEW IN BROWSER](#)

updated 12. 4. 2022 | published 27. 3. 2022

Summary

Lithophane tealight holder I modeled with inspiration from sestosanto on myminifactory. I made the gap between the...

[Household](#) > [Other House Equipment](#)

Tags: [light](#) [candle](#) [holder](#) [lithophane](#) [tealight](#)
[tealightholder](#) [lithopane](#)

Lithophane tealight holder I modeled with inspiration from [sestosanto on myminifactory](#).

I made the gap between the candle and the image smaller because I found it wasn't lit up enough for my liking (the melted top of the lithophane in the photo is not because of this design but rather a failed experiment involving blu-tack).

I also increased the gap holding the lithophane to 3.5mm.

Print Settings

Printer Brand:

Creality

Printer:

Ender 3 Pro

Rafts:

No

Supports:

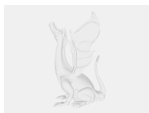
No

Infill:

20%

Category: Decor

Model files



lithophane_tealight_holder.f3d



lithophane_tealight_holder.stl

[Find source .stl files on Thingiverse.com](#)

License

This work is licensed under a
Creative Commons (4.0 International License)



Attribution

-
- ✗ | Sharing without ATTRIBUTION
 - ✓ | Remix Culture allowed
 - ✓ | Commercial Use

- ✓ | Free Cultural Works
- ✓ | Meets Open Definition