

Wasserhahn Befestigung



SasKI93

[VIEW IN BROWSER](#)

updated 14. 4. 2023 | published 14. 4. 2023

Summary

Befestigung für jegliche Wasserhahn Armatur. Attachment for any faucet fitting.



0.58 hrs



1 pcs



0.30 mm



0.40 mm



PLA



14 g



Prusa
MK3/S/S+

[Household](#) > [Other House Equipment](#)

Tags: [water](#) [bathroomsink](#) [befestigung](#) [armature](#)
[wasserhahn](#) [waschbecken](#)

Befestigung für jegliche Wasserhahn Armatur.

Attachment for any faucet fitting.

Drucker (Printer) : Prusa MK3S+

Filament : PLA (von Prusament)

Düse (Nozzle) : 0,4mm

Schichthöhe (Layer height) : 0,3mm

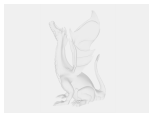
Infill : 100 %

Stützen (Supports) : "keine" ("none")

Model files



wasserhahn_armatur-v1.stl



halterung_armatur.f3d

Print files



wasserhahn_befestigung_03mm_pla_mk3s_35m.gcode

⚙ PLA ⚙ 0.40 mm ≡ 0.30 mm ⌚ 0.58 hrs ⚖ 14 g 🖨 Prusa MK3/S/S+

License

This work is licensed under a
Creative Commons (4.0 International License)



Attribution-ShareAlike

- ✗ | Sharing without ATTRIBUTION
- ✓ | Remix Culture allowed
- ✓ | Commercial Use
- ✓ | Free Cultural Works
- ✓ | Meets Open Definition

