



## GMC/Chevy Canyon/Colorado dash cubby enclosure for garage door opener



MeltinPlastic

[VIEW IN BROWSER](#)

updated 28. 3. 2022 | published 27. 3. 2022

### Summary

These pickup trucks don't come with a built-in garage door opener. This print fits in the dash cubby.

[Hobby & Makers](#) > [Automotive](#)

Tags: [garageopener](#) [colorado](#) [canyon](#)

It surprises many that GMC/Chevy doesn't offer a built-in garage door opener on their Canyon or Colorado pickup trucks, even the most expensive models! Sad but true. This project uses the small inset in the dash some call the dash cubby. It really isn't large enough for much of anything, but my small garage door opener will fit when slid into a 3D printed enclosure.

I used OpenScad to create the design. I looked far and wide for smaller garage door openers hoping I could have the door opener fit so the switches would face the front of the enclosure but I couldn't find any small enough. So I cut a protoboard to mount switches on along with an LED and connect wires to the remote control circuit board I had. The remote control

slides in horizontally and the protoboard is fastened to the front plate with 4-40 screws and printed standoffs.

By the way, maybe you have another need for the dash cubby, the enclosure design may be useful in a remix.

The enclosure has a friction fit and can be difficult to remove, so be sure you have everything right before installing tightly.

For this project you'll need:

1 Garage Door opener remote circuit board with dimensions 65 mm wide by 36 mm high or less. In my case, the 36 mm includes space for the batteries that stick out. There may be a little more depth available, but measure carefully. Note that garage door opener remotes only work for certain models of openers, so if you buy one, be sure it is compatible.

You'll have to remix the circuit board slides if your dimensions are different.

1 protoboard cut to size. Mine was 78 mm wide by 12 mm high. I used BPS BusBoard Prototype Systems part #PR2H3U

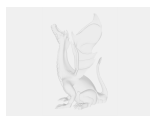
3 pushbutton switches, C&K part number D6R90F1LFS

1 LED, Knightbright Red diffused part number WP132XID

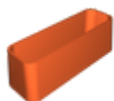
Hookup wire to connect the protoboard to the remote control. Six short wires will be required, I use 22 guage stranded.

I printed in black PLA with .20mm detail.

## Model files



**canyon-insert.scad**



**canyon-insert.stl**

# License

This work is licensed under a  
**Creative Commons (International License)**



## **Public Domain**

---

- ✓ | Sharing without ATTRIBUTION
- ✓ | Remix Culture allowed
- ✓ | Commercial Use
- ✓ | Free Cultural Works
- ✓ | Meets Open Definition