



## Color key caps and lock rings



jcjames\_13009

[VIEW IN BROWSER](#)

updated 23. 8. 2022 | published 23. 8. 2022

### Summary

Looking for a solution to help my mother having vision problems to recognize keys and locks for her entrance door



0.91 hrs



2 pcs



0.10 mm  
0.20 mm



0.40 mm



PLA



5 g



Prusa MINI /  
MINI+

[Household](#) > [Other House Equipment](#)

Tags: [color](#) [key](#) [keycap](#) [lock](#)

Starting from <https://www.prusaprinters.org/prints/146151-key-cap-tag-recognizer> and other designs found here, I adapted caps to keys and complete it with same color lock rings. So now keys and locks are easy to match

Printed in Prusament PLA can be printed in PETG as well. In fact any filament spool end can be used

On top of .stl and .3mf files I uploaded Fusion 360 .f3d one so you can modify the design and adapt it to your needs. I used Parametric feature for key cap. Just define key diameter and thickness as well as hole diameter and position. Cap will be sized automatically

As usual, feedback and comments (and for sure "likes") will be always welcome. Feel free to post nice pictures of your makes

Enjoy

If you like this model, take a look also at [my other designs](#)

## This remix is based on



**Key cap / tag / recognizer**

by SH

## Model files



**cache-cle-couleur.stl**



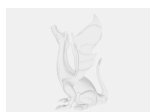
**cache-serrure-couleur.stl**



**cache-cle-couleur.3mf**



**cache-serrure-couleur.3mf**



**caches-cles-couleurs-v14.f3d**

# Print files



## cache-cle-couleur-orange\_01mm\_3p\_pla\_215\_mini\_4.gcode

🌀 PLA 📏 0.40 mm 📐 0.10 mm ⌚ 0.68 hrs ⚖️ 2 g 🖨️ Prusa MINI / MINI+



## cache-serrure-couleur\_02mm\_2p\_pla\_215\_mini\_14m\_.gcode

🌀 PLA 📏 0.40 mm 📐 0.20 mm ⌚ 0.23 hrs ⚖️ 3 g 🖨️ Prusa MINI / MINI+

# License ©

This work is licensed under a  
[Creative Commons \(4.0 International License\)](#)



**Attribution—Noncommercial—Share Alike**

- ✗ | Sharing without ATTRIBUTION
- ✓ | Remix Culture allowed
- ✗ | Commercial Use
- ✗ | Free Cultural Works
- ✗ | Meets Open Definition