

Simple nozzle box for the nozzles I normally use



Rui Monteiro

[VIEW IN BROWSER](#)

updated 28. 3. 2022 | published 28. 3. 2022

Summary

This is just a simple nozzle box for the nozzles I use most often.



24.97 hrs



2 pcs



0.20 mm



0.40 mm



PLA



287 g



Prusa
MK3S/S+ &
MMU2S

[3D Printers](#) > [Accessories](#)

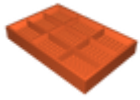
Tags: [organizer](#) [nozzleholder](#) [nozzlebox](#)

This is just a simple nozzle box for the nozzles I use most often.

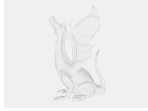
Model files

nozzleboxlid.stl





nozzleboxboddy.stl



nozzle-box-10-v3.step



nozzle-box-10-v1.f3d

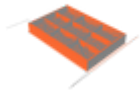
Print files



nozzle-box-lid-10-_02mm_pla_mk3smmu2s_5h6m.gcode

🌀 PLA 🌀 0.40 mm ≡ 0.20 mm ⌚ 5.11 hrs ⚖️ 73 g

🖨️ Prusa MK3S/S+ & MMU2S



nozzle-box-10-boddy-_02mm_pla_mk3smmu2s_19h52m.gcode

🌀 PLA 🌀 0.40 mm ≡ 0.20 mm ⌚ 19.86 hrs ⚖️ 214 g

🖨️ Prusa MK3S/S+ & MMU2S

License ©

This work is licensed under a
Creative Commons (4.0 International License)



Attribution-NonCommercial

- ✖ | Sharing without ATTRIBUTION
- ✓ | Remix Culture allowed
- ✖ | Commercial Use
- ✖ | Free Cultural Works
- ✖ | Meets Open Definition

