



## Mineral Vase



Monomethylhydrazine

[VIEW IN BROWSER](#)

updated 12. 4. 2022 | published 1. 1. 2020

### Summary

Hi all, this is a vase I made to look similar to, or at least evoke, a Quartz crystal.



7.65 hrs



1 pcs



0.08 mm



0.40 mm



PLA



18 g



Prusa MK2/S

[Art & Design](#) > [Sculptures](#)

Tags: [vase](#) [art](#) [fusion360](#) [fusion](#) [spiralvase](#)  
[spiralvasemode](#) [mineral](#) [mineralvase](#)

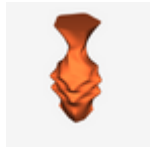
Hi all, this is a vase I made to look similar to, or at least evoke, a Quartz crystal. What really make this vase interesting to me is that it manipulates the FDM process to produce effects. At 0.24mm and higher, the top layers of the "nubs" (those protuberances on the side that remind me of a crystal) separate from each other and droop down. I love that effect. At approximately 0.12mm (depending on printer) and lower, those droops disappear, leaving a completely unified surface. This vase is well worth the print. I've included gcode for 0.24mm in the user print files and 0.08mm is included under the main section.

Thank you for printing!

## Print instructions

Category: Sculptures

## Model files



**mineral\_vase\_15594.stl**

## Print files



**mineral-vase\_008mm\_pla\_mk2s\_7h39m.gcode**

🌀 PLA 🌀 0.40 mm 🌀 0.08 mm 🕒 7.65 hrs 📊 18 g 🖨️ Prusa MK2/S

[Find source .stl files on Thingiverse.com](#)

## License ©

This work is licensed under a  
**Creative Commons (4.0 International License)**



### Attribution

- 
- ✗ | Sharing without ATTRIBUTION
  - ✓ | Remix Culture allowed
  - ✓ | Commercial Use
  - ✓ | Free Cultural Works
  - ✓ | Meets Open Definition