

## Two Faced Vase



Monomethylhydrazine

[VIEW IN BROWSER](#)

updated 12. 4. 2022 | published 31. 12. 2019

### Summary

Hi all, this vase I have for you today was designed to have an internal wall.



15.74 hrs



1 pcs



0.08 mm



0.40 mm



PLA



53 g



Prusa MK2/S

[Art & Design](#) > [Sculptures](#)

Tags: [vase](#) [art](#) [spiral](#) [fusion360](#) [vasemode](#)  
[spiralvasemode](#) [prusaslicer](#)

Hi all, this vase I have for you today was designed to have an internal wall. I think its a kinda fun idea and this is more an experiment than anything else. It prints great and has a real fun tangible feeling in your hands. Its one hell of an object.

Recommended layer height: 0.08 mm

Printing notes: n/a

Post-print cleanup: The top might get a bit stringy/nasty. A file and sandpaper will take care of that.

As always, I've included gcode here for what I think is the ideal layer height for this print. Thank you for printing!

## Print instructions

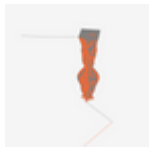
Category: Sculptures

## Model files



**two-faced\_vase.stl**

## Print files



**two-faced-vase\_008mm\_pla\_mk2s\_15h45m.gcode**

🌀 PLA 🌀 0.40 mm 🌀 0.08 mm 🕒 15.74 hrs 📊 53 g 🖨️ Prusa MK2/S

[Find source .stl files on Thingiverse.com](#)

## License ©

This work is licensed under a  
**Creative Commons (4.0 International License)**



### Attribution

- 
- ✗ | Sharing without ATTRIBUTION
  - ✓ | Remix Culture allowed
  - ✓ | Commercial Use
  - ✓ | Free Cultural Works
  - ✓ | Meets Open Definition