



Glowing light switch marker



[VIEW IN BROWSER](#)

updated 28. 3. 2022 | published 28. 3. 2022

Summary

Ever tried to find light switch in a dark room? With fluorescent filament and this marker it can be easy :)



0.05 hrs



1 pcs



0.20 mm



0.40 mm



PLA



1 g



Prusa
MK3/S/S+

[Household](#) > [Other House Equipment](#)

Tags: [switch](#) [glowinthedark](#) [glowing](#) [glowindark](#) [fluorescent](#)
[switchmarker](#)

Info:

- just a simple idea, how to make life little easier
- print 2 of these, glue it to the switch (or use 2 sided adhesive tape as me) and that's it

Print instructions:

- fluorescent filament

Model files

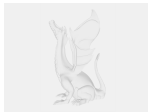
marker.stl



marker.3mf



marker.blend





☐ model

Print files

marker2x_02mm_pla_mk3s_3m.gcode



 PLA  0.40 mm  0.20 mm  0.05 hrs  1 g  Prusa MK3/S/S+

☐ 2 pieces of markers

License

This work is licensed under a
[Creative Commons \(4.0 International License\)](https://creativecommons.org/licenses/by-nc/4.0/)



Attribution-NonCommercial

- ✗ | Sharing without ATTRIBUTION
- ✓ | Remix Culture allowed
- ✗ | Commercial Use
- ✗ | Free Cultural Works
- ✗ | Meets Open Definition