

Nozzle Box



Wout

[VIEW IN BROWSER](#)

updated 30. 3. 2022 | published 30. 3. 2022

Summary

This is the only nozzle box you will ever need!



9.04 hrs



2 pcs



0.20 mm



0.40 mm



PLA



84 g



Creality
Ender-3

[3D Printers](#) > [Accessories](#)

Tags: [container](#) [nozzle](#) [nozzles](#) [nozzleholder](#) [containers](#)
[nozzlebox](#) [nozzlecase](#)

After endless searching for a nozzle box and not finding what I was looking for. I made this. It has enough places for the nozzles you use but it does not have too many holes for those nozzles. It has more nozzles places for nozzles you use more. I hope you like this model and keep your nozzles safe.

Specifications:

0.2mm layer height

2 perimeters

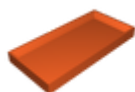
infill 10%

Material:

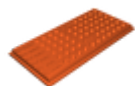
Polyterra charcoal black

Some leftover orange I don't know the name of.

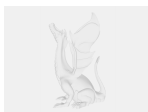
Model files



nozzle_box-lid.3mf



nozzle_box-case.3mf



nozzle-box.step

Print files



nozzle_box-lid_3h26m_020mm_200c_pla_ender3v2.gcode

🌀 PLA 📏 0.40 mm 📐 0.20 mm ⌚ 3.44 hrs ⚖️ 37 g 🖨️ Creality Ender-3



nozzle_box-case_5h36m_020mm_200c_pla_ender3v2.gcode

🌀 PLA 📏 0.40 mm 📐 0.20 mm ⌚ 5.60 hrs ⚖️ 47 g 🖨️ Creality Ender-3

License

This work is licensed under a
Creative Commons (4.0 International License)



Attribution-NonCommercial

- ✗ | Sharing without ATTRIBUTION
- ✓ | Remix Culture allowed
- ✗ | Commercial Use
- ✗ | Free Cultural Works
- ✗ | Meets Open Definition