

## Support Mini Spool holder brace remix



Coudbol

[VIEW IN BROWSER](#)

updated 29. 3. 2022 | published 29. 3. 2022

### Summary

Small enhancement for Mini Spool holder brace remix.



0.28 hrs



1 pcs



0.30 mm



0.80 mm



PLA



10 g



Prusa MINI /  
MINI+

[3D Printers](#) > [3D Printers - Upgrades](#)

Tags: [brace](#) [spoolholder](#) [prusaminifilamentholder](#)

First of all thanks for **StuffMaker2** for giving this remix model.

I have seen by using a fully loaded spool (700g - 1kg), the weight of the spool is nearly bending the spool holder because of the gap between the base of spool holder and desk.

I have made a simple 3,3 mm support insert that you can put between desk and the base of spool holder.

For my needs i have measured 3,3 mm between desk and spool holder base.

if needed you can take the FreeCAD model and modify it for your needs.

Printed with PLA in 17min using 0.8 nozzle and 15 infill

Enjoy.

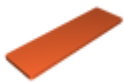
## This remix is based on



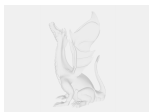
**Mini Spool holder brace remix**

by StuffMaker2

## Model files



**zbrace\_prusamini\_support-fillet.stl**



**zbrace\_prusamini\_support.fcstd**

## Print files



**zbrace\_prusamini\_support-fillet\_08n\_03mm\_pla\_mi.gcode**

🌀 PLA 📏 0.80 mm 📐 0.30 mm ⌚ 0.28 hrs ⚖️ 10 g 📄 Prusa MINI / MINI+

## License ©

This work is licensed under a

**Creative Commons (4.0 International License)**



## Attribution-NonCommercial

---

- ✗ | Sharing without ATTRIBUTION
- ✓ | Remix Culture allowed
- ✗ | Commercial Use
- ✗ | Free Cultural Works
- ✗ | Meets Open Definition