



Cessna Panel Pin

M Matthew Kosmoski

[VIEW IN BROWSER](#)

updated 21. 6. 2022 | published 29. 3. 2022

Summary

Pin to mount panel cover in a Cessna 172.

[Hobby & Makers](#) > [Mechanical Parts](#)

Tags: [aircraft](#) [cessna](#) [skyhawk](#) [ownerproducedpart](#) [aviation](#)
[generalaviation](#)

I had the panel facade of my 172 begin to deteriorate and during the effort to replace it, I came to realize that nobody sells the golf tee-looking pins that affix the facade to the underlying structure.

This pin is a reproduction of that to be installed as an owner produced part.

It has not gone through sufficient testing (and I haven't installed it on the aircraft yet), but it's non-structural and I expect it to be airworthy. Based on preliminary testing, it is recommended to be printed horizontally (with support) for structural integrity.

Update June 2022: Created longer variants due to a deeper facade in my new panel.

Model files



cessna-panel-pin-19.fcstd



cessna-panel-pin-19.stl



cessna-panel-pin-19.step



cessna-panel-pin-24.fcstd



cessna-panel-pin-24.stl



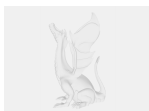
cessna-panel-pin-24.step



cessna-panel-pin-29.fcstd



cessna-panel-pin-29.stl



cessna-panel-pin-29.step

[Find source .stl files on Thingiverse.com](https://www.thingiverse.com)

License

This work is licensed under a
Creative Commons (4.0 International License)



Attribution-ShareAlike

-
- ✗ | Sharing without ATTRIBUTION
 - ✓ | Remix Culture allowed
 - ✓ | Commercial Use
 - ✓ | Free Cultural Works
 - ✓ | Meets Open Definition