



Butterfly Display Case

z zeleznyt

[VIEW IN BROWSER](#)

updated 30. 3. 2022 | published 29. 3. 2022

Summary

Display case for one butterfly.



10.81 hrs



2 pcs



0.15 mm
0.20 mm



0.40 mm



PET



109 g



Prusa
MK3/S/S+

[Art & Design](#) > [Other Art & Designs](#)

Tags: [frame](#) [case](#) [animal](#) [pin](#) [enclosure](#) [ikeaenclosure](#)
[butterfly](#) [bugs](#) [collector](#) [collection](#) [lackenclosure](#)
[displaycase](#) [ikealackenclosure](#) [butterflies](#) [collectables](#)

Display case for one butterfly

If you made an enclosure for your printer and the rest of the 3 mm plexi glass is still laying around (like me), maybe this is cool thing you can make from it 😊 It can be used for displaying anything of similar size that needs to be pinned.

Dimensions:

Interior dimensions: 100x70x35 mm

Exterior dimensions: 120x90x52 mm

Meant for:

3 mm (Plexi)glass (To prevent damaging the butterfly)

1 mm Balsa wood (Or something else visually handsome for background)

10 mm Polystyrene (Or other foam to stick pin in)

Dimensions of plexi etc.: 115x85 mm

I'm also adding export file from Fusin360 project for easier modifying.

Printing instructions:

Printed from Prusament PETG Galaxy black with 0.4 mm nozzle and 0.15 - 0.20 mm layer thickness. PLA can be also used.

Assembly instructions:

Slide into the printed Frame in order plexi→printed

Distance_frame→balsa→polystyren

For gluing I used double-sided tape. It works perfect. Tape between plexi and Distance_frame needs to be placed with 1-2 mm margin, otherwise it could be seen through the plexi.

Enjoy

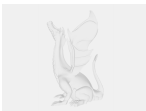
Model files



frame.3mf



distance_frame.3mf



butterfly_case.f3d

☐ Export from Fusin360 project for easier modifying

Print files



frame_015mm_petg_mk3s_6h40m.gcode

⚙ PET ⚙ 0.40 mm ⚙ 0.15 mm ⌚ 6.67 hrs ⚖ 60 g 🖨 Prusa MK3/S/S+



distance_frame_02mm_petg_mk3s_4h8m.gcode

⚙ PET ⚙ 0.40 mm ⚙ 0.20 mm ⌚ 4.14 hrs ⚖ 49 g 🖨 Prusa MK3/S/S+

License ©

This work is licensed under a
[Creative Commons \(4.0 International License\)](#)



Attribution

- ✗ | Sharing without ATTRIBUTION
- ✓ | Remix Culture allowed
- ✓ | Commercial Use
- ✓ | Free Cultural Works
- ✓ | Meets Open Definition