



## Moppe Handle

k kfricke

[VIEW IN BROWSER](#)

updated 27. 12. 2019 | published 27. 12. 2019

### Summary

This is a simple handle to get better external grip to the containers called Moppe.



0.41 hrs



1 pcs



0.30 mm



0.40 mm



PLA



4 g



Prusa  
MK3/S/S+

[Hobby & Makers](#) > [Organizers](#)

Tags: [ikea](#) [container](#) [moppe](#)

This is a simple handle to get better external grip to the containers called Moppe. This is especially usefull when the container is completely full or blocked from the inside.

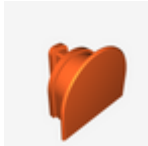
The spacer model is used as a spacer in case the container wall thickness is thinner as modelled.

Hot glue can be used to keep the handle in place if needed.

## Print instructions

No support needed to print the handle. You can print this with huge nozzles diameters and layer heights.

## Model files



handle.3mf



handle.stl



handle\_spacer\_025.stl

## Print files



handle\_03mm\_pla\_mk3s\_25m.gcode

🌀 PLA 📏 0.40 mm 📏 0.30 mm ⌚ 0.41 hrs 📊 4 g 🖨️ Prusa MK3/S/S+

## License ©

This work is licensed under a  
[Creative Commons \(4.0 International License\)](#)



**Attribution-ShareAlike**

- ✘ | Sharing without ATTRIBUTION
- ✓ | Remix Culture allowed
- ✓ | Commercial Use
- ✓ | Free Cultural Works
- ✓ | Meets Open Definition