

Spool Drawers



Basement Creations

[VIEW IN BROWSER](#)

updated 12. 4. 2022 | published 30. 3. 2022

Summary

YouTube video: <https://youtu.be/vD4O1wUpaXA> This project is my approach at making Filament Spools useful again....

[Hobby & Makers](#) > [Other Ideas](#)

Tags: [spool](#) [filamentpool](#) [drawers](#) [spooldrawer](#)

YouTube video: <https://youtu.be/vD4O1wUpaXA>

This project is my approach at making Filament Spools useful again. Therefore I designed 4 types of drawers that can fit inside the spool and can be easily opened. Those drawers are held in place by 2 M3 screws that work like a hinge. In order to assemble and stack those drawers you most likely will need to drill some 3mm holes for the screws and also split some spools in half. My design is based on the Spools from Polish filament producer Plast-Spaw so if you are not sure if those drawers will be compatible with your spools you can download my .STEP or .F3D file and measure all the parts for yourself (Or remix them as as you wish).

Print Settings

Printer Brand:

Creality

Printer:

Ender 3

Rafts:

Doesn't Matter

Supports:

No

Resolution:

0,24

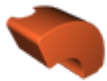
Infill:

10

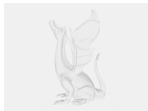
Filament: PlastSpaw PLA

Category: Hobby

Model files



drawer.stl



filament_spool_drawers.f3d



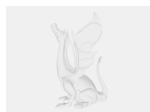
drawer_short.stl



drawer_divided.stl



drawer_short_divided.stl



filament_spool_drawers.step

[Find source .stl files on Thingiverse.com](#)

License ©

This work is licensed under a
Creative Commons (4.0 International License)



Attribution

-
- ✗ | Sharing without ATTRIBUTION
 - ✓ | Remix Culture allowed
 - ✓ | Commercial Use
 - ✓ | Free Cultural Works
 - ✓ | Meets Open Definition