



Metabee figurine



ivancebellan

[VIEW IN BROWSER](#)

updated 23. 4. 2022 | published 30. 3. 2022

Summary

Medabot figurine (requires assembly)



5.03 hrs



1 pcs



0.20 mm



0.40 mm



PLA



36 g



Artillery
Sidewinder
X1

[Toys & Games](#) > [Action Figures & Statues](#)

Tags: [figurine](#) [figure](#) [assemblyrequired](#) [medarots](#) [metabee](#)
[medarot](#) [medabots](#) [kuwagata](#) [medabot](#)

modeled in blender from scratch using references from a figurine.

blend file included with armature to pose the model

included .3mf file with pieces already layed out

included stl with pieces already layed out "metabee-layed-out.stl"

fits a 170 x 170 mm

Print Settings

Rafts: Doesn't Matter

Supports: Yes

Resolution: 200

Infill: 5%

Filament material: PLA

Model files



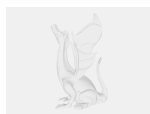
metabee-layed-out.stl

☐ pieces layed out



metabee-layout-16cm_by_17cm.3mf

☐ pieces layed out




metabee.blend

☐ posable 3D model

Print files



metabee-layed-out.gcode

 PLA  0.40 mm  0.20 mm  5.03 hrs  36 g

License

This work is licensed under a
[Creative Commons \(4.0 International License\)](https://creativecommons.org/licenses/by-nc-sa/4.0/)



Attribution—Noncommercial—Share Alike

- ✕ | Sharing without ATTRIBUTION
- ✓ | Remix Culture allowed
- ✕ | Commercial Use
- ✕ | Free Cultural Works
- ✕ | Meets Open Definition