



Filament Guide



NarlyB

[VIEW IN BROWSER](#)

updated 12. 4. 2022 | published 28. 12. 2019

Summary

I needed a filament guide that had an easy feed/entry I used a "PC4-M10 Male Straight" Pneumatic fitting (you can...

[3D Printers](#) > [Accessories](#)

Tags: [mmu](#) [mmu2s](#) [mmu2](#) [guide](#) [prusai3mk3smmu2s](#)
[prusai3mk3mmu2](#) [fillamentguide](#)

I needed a filament guide that had an easy feed/entry

I used a "PC4-M10 Male Straight" Pneumatic fitting (you can search for them online at your favorite store)

I printed the cap for aesthetics.

Fusion 360 file included.

Print instructions Category: 3D Printer Accessories Print Settings

Printer Brand: Prusa

Printer: I3 MK3S

Rafts: No

Supports: No

Resolution: 0.10 to 0.20

Infill: Default

Filament: Any PLA or any any How I Designed This

Fusion 360.

Model files



cap_15670.stl



cap_15670.stl



cap_15670.stl



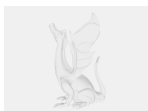
cap_15670.stl



filament_guide_15670.stl



cap.stl



cap-1.f3d



fillament_guide.stl



spool_box_fillament_guide_v1.f3d

[Find source .stl files on Thingiverse.com](#)

License ©

This work is licensed under a
Creative Commons (4.0 International License)



Attribution

-
- ✗ | Sharing without ATTRIBUTION
 - ✓ | Remix Culture allowed
 - ✓ | Commercial Use
 - ✓ | Free Cultural Works
 - ✓ | Meets Open Definition